

# **DELHI TRANSCO LTD.**

STATE LOAD DISPATCH CENTER

## **PROGRESS REPORT**

\*\*\*\*\*

AUGUST - 2009

<b>S. No.</b>	<b>CONTENTS</b>	<b>Page No.</b>
<b>1.</b>	<b>Salient Features of Delhi Power System</b>	<b>3</b>
<b>2.</b>	<b>Performance of Generating Stations within Delhi</b>	<b>4</b>
<b>3.</b>	<b>Details of Outage of Generating Stations within Delhi</b>	<b>4-13</b>
<b>4.</b>	<b>Allocation of Power to Delhi from unallocated quota of central sector</b>	<b>14-19</b>
<b>5.</b>	<b>Allocation of Power to Discoms</b>	<b>20</b>
<b>6.</b>	<b>Power Availability Demand Position of Delhi at the time of occurrence of Peak Demand</b>	<b>21</b>
<b>7.</b>	<b>Power Availability Demand Position of Delhi at the time of occurrence of Maximum Un-Restricted Demand</b>	<b>22</b>
<b>8.</b>	<b>Source wise scheduled drawl from grid and Availability within Delhi</b>	<b>23-25</b>
<b>9.</b>	<b>Shedding Details</b>	<b>26-29</b>
<b>10.</b>	<b>Load Curve for the Day of Peak Demand</b>	<b>30</b>
<b>11.</b>	<b>Load Curve for the day of occurrence of Maximum Un-Restricted Demand</b>	<b>31</b>
<b>12.</b>	<b>Load Curve for the day of Maximum Energy Consumed</b>	<b>32</b>
<b>13.</b>	<b>Load Curve for the day of Maximum Un-Restricted Energy Demand</b>	<b>33</b>
<b>14.</b>	<b>Load Duration Curve</b>	<b>34</b>
<b>15.</b>	<b>Frequency Analysis</b>	<b>35</b>
<b>16.</b>	<b>Voltage Profile for significant 220kV Sub-Stations</b>	<b>36</b>
<b>17.</b>	<b>Voltage Profile for significant 400kV Sub-Stations</b>	<b>37-38</b>
<b>18.</b>	<b>Details of Capacitors Installations in Delhi</b>	<b>39-46</b>
<b>19.</b>	<b>Tripping Details of 400/220 KV System in Delhi Power System</b>	<b>47-51</b>
<b>20.</b>	<b>Details of Under frequency Relay operations in Delhi Power System</b>	<b>52-56</b>

1

**SALIENT FEATURES OF DELHI POWER SYSTEM**

<b>Sr. No.</b>	<b>Features</b>	<b>AUG 2009</b>	<b>AUG 2008</b>
<b>1</b>	<b>Effective Generation Capacity within Delhi in MW</b>		
	Indraprastha Power Station	247.5	247.5
	Rajghat Power House	135	135
	Gas Turbine	270	282
	Pragati Power Corporation Ltd.	330	330
	Badapur Thermal Power Station	705	705
	<b>Total</b>	<b>1687.5</b>	<b>1699.5</b>
<b>2</b>	<b>Maximum Unrestricted Demand (MW)</b>	<b>4445</b>	<b>4019</b>
	Date	12.08.2009	28.08.08
	Time	16.00.00	21.55.17
<b>3</b>	<b>Peak Demand met (MW)</b>	<b>4352</b>	<b>3892</b>
	Date	13.08.09	27.08.08
	Time	15.36.02	22.15.13
4	Peak Availability (MW)	3948	3163
5	Shortage (-) / Surplus (+) in MW	(-)404	(-)729
6	Percentage Shortage (-) / Surplus (+)	(-)9.28	(-)18.73
7	Maximum Energy Consume in a day (Mus)	84.762	79.866
8	Energy Consumed during the month	<b>2402.553</b>	<b>2217.550</b>
<b>9</b>	<b>Load Shedding in Mus</b>		
A)	Due to Grid Restrictions		
i)	Under Frequency Relay Operations	2.739	2.851
ii)	Manual Load shedding from DTL S/Stns.	0.000	0.000
iii)	Load Shedding due to low frequency / Low Voltage / TTC/ATC Violation		
	NDPL	6.144	0.532
	BRPL	11.067	0.983
	BYPL	3.878	0.387
	NDMC	0.000	0.000
	MES	0.000	0.000
iv)	Due to transmission Constraints in Central Sector	0.019	0.000
	<b>Total due to Grid Restriction</b>	<b>23.847</b>	<b>4.753</b>
B)	Due to Constraints in System in Mus		
	DTL	3.453	0.512
	NDPL	5.652	0.171
	BRPL	1.758	2.244
	BYPL	0.674	0.360
	NDMC	0.000	0.012
	MES	0.000	0.000
	Other Agencies	0.213	0.116
	<b>Total</b>	<b>11.750</b>	<b>3.415</b>
<b>11</b>	<b>Grand Total in Mus</b>	<b>35.597</b>	<b>8.168</b>

## 2. PERFORMANCE OF GENERATING STATIONS WITHIN DELHI DURING AUGUST 2009

### A) For the month of August 2009

All Figures in MUs

S. No	Stations	Gross Generation	Aux. Consumption	Net Generation	Availability (%)	Backing Down
1.	IP	54.07700	8.69600	45.38100	27.44	0.0000
2.	RPH	57.72200	9.33500	50.38700	56.49	0.000
3.	GT	149.06900	4.98800	144.08100	75.61	4.50876
4.	PPCL	152.86600	4.76400	148.10200	61.91	0.0000
5.	BTPS	439.54619	48.35008	391.19611	83.59	4.18500
	<b>TOTAL</b>	<b>853.28019</b>	<b>76.13308</b>	<b>779.14711</b>		<b>8.69376</b>

### B) For the Year 2009-10(Upto August 2009)

Power Station	Effective Capacity (MW)	Net Generation in MUs For Aug. 09	Availability (%) For Aug.'09	PLF (%) For Aug. 09	Cumulative Generation in MUs upto Aug. 09 for the year 2009-10	Cumulative Availability in % upto Aug. 09 for the year 2009-10	Cumulative PLF in % upto Aug 09 for the year 2009-10
IP	247.5	45.38100	27.44	27.44	320.18200	38.84	38.84
RPH	135	50.38700	56.49	56.49	273.40900	62.35	62.35
GT	282	144.08100	75.61	73.30	642.52200	71.16	66.78
PPCL	330	148.10200	61.91	61.91	923.29900	79.22	77.93
BTPS	705	391.19611	83.59	82.69	2172.04144	94.20	93.01
<b>TOTAL</b>	<b>1699.5</b>	<b>779.14711</b>			<b>4331.45344</b>		

## 3 DETAILS OF OUTAGES OF GENERATING STNS. WITHIN DELHI W.E.F. APRIL 2009

### (A) IP STATION

Unit no.	Capacity in MW	Outage		Synchronization		Reason of Outage
		Date	Time	Date	Time	
2	62.5	03.04.09	07.02	03.04.09	08.58	D- Radiator Level not maintained.
		03.04.09	09.35	05.04.09	07.25	Loss of excitation
		21.04.09	05.22	27.04.09	23.05	Boiler Tube Leakage
		17.05.09	00.07	19.05.09	12.03	Problem in Bottom System
		19.05.09	21.20	20.05.09	02.15	Low vacuum
		22.05.09	14.39	22.05.09	16.15	Due to tripping of associated transmission lines.
		01.06.09	09.25	01.06.09	11.08	
		05.06.09	15.08	05.06.09	16.40	
		15.06.09	13.32	15.06.9	14.30	
		29.06.09	22.50	01.07.09	15.45	Boiler Tube Leakage
		06.07.09	12.40	06.07.09	13.53	Fire out.
		14.07.09	09.40	14.07.09	11.35	Due to tripping of associated transmission lines.
		28.07.09	10.53	28.07.09	20.15	Steam line burnt
		03.08.09	05.05	03.08.09	17.52	Problem in Boiler Feed Pump
11.08.09	17.50	13.08.09	07.40	Boiler Tube Leakage		
27.08.09	17.30	08.09.09	20.28	Due to tripping of associated transmission lines. Could not synchronized due to Durator Valve Knob		

Unit no.	Capacity in MW	Outage		Synchronization		Reason of Outage
		Date	Time	Date	Time	
3	62.5	06.04.09	13.38	09.04.09	07.07	Boiler Tube Leakage
		06.05.09	06.30	08.05.09	21.55	Boiler Tube Leakage
		19.05.09	21.11	20.05.09	04.58	Low vacuum
		28.05.09	09.22	28.05.09	11.35	Bus differential operation.
		01.06.09	09.29	01.06.09	11.52	Due to tripping of associated transmission lines.
		10.06.09	09.52	10.06.09	12.10	Vacuum Problem
		14.06.09	00.01	28.06.09	08.35	Boiler Tube Leakage
		12.07.09	10.50	15.07.09	00.12	Boiler Tube Leakage
		31.07.09	20.30	01.08.09	04.44	Due to jerk
		02.08.09	22.58	03.08.09	10.30	Low coal flow
		05.08.09	00.10	08.08.09	01.50	Condenser Tube Leakage
		11.08.09	09.30	11.08.09	15.43	No Coal Flow
		17.08.09	08.55	17.08.09	11.43	Due to tripping of associated transmission lines.
		17.08.09	14.01	18.08.09	23.55	Problem in Coal Bunker
		24.08.09	21.10	25.08.09	20.25	Shortage of DM Water.
		27.08.09	17.50	28.08.09	00.50	Due to tripping of associated transmission lines.
28.08.09	22.50	06.09.09	14.02	Boiler Tube Leakage		
4	62.5	04.04.09	10.30	04.04.09	12.32	Electrocution Trip Device Alarm
		29.04.09	05.10	29.04.09	09.35	Coal mill problem
		29.04.09	12.43	13.05.09	16.43	Main Buchloz Relay Operated(Tx-4)
		19.05.09	21.11	24.05.09	15.05	Low vacuum
		25.05.09	19.42	27.05.09	23.15	Boiler Tube Leakage
		28.05.09	09.25	28.05.09	10.34	Bus differential operation.
		01.06.09	09.25	12.06	18.45	Reduction Gear Problem
		15.06.09	13.32	15.06.09	15.10	Due to tripping of associated transmission lines.
		22.06.09	20.57	24.06.09	04.40	Boiler Tube Leakage
		29.06.09	22.50	30.06.09	01.40	Due to tripping of associated transmission lines.
		04.07.09	06.00	15.07.09	16.25	Shortage of DM water
		26.07.09	15.55	27.07.09	07.12	Due to fire in boiler
		28.07.09	05.30	30.07.09	01.10	Shortage of coal
		03.08.09	07.30	03.08.09	08.58	Low Vacuum
		10.08.09	04.25	10.08.09	22.55	Coal Bunker Empty
		17.08.09	08.55	17.08.09	10.05	Coal Bunker Empty
18.08.09	05.40	18.05.09	06.58	Low Coal Flow		
18.08.09	07.10	28.08.09	11.55	Condenser Tube Leakage		
28.08.09	14.45	29.08.09	13.12	Heavy Steam Leakage in Boiler		
5	60	31.03.09	04.03	04.04.09	05.58	Electrocution Trip Device Alarm
		09.04.09	02.40	12.04.09	00.35	Boiler Tube Leakage
		12.04.09	17.40	15.04.09	16.45	Electrocution Trip Device Alarm
		15.04.09	19.43	18.04.09	23.17	Electrocution Trip Device Alarm
		22.04.09	19.02	24.04.09	16.00	Condenser Tube Leakage
		04.05.09	09.45	04.05.09	10.26	Tripped due to jerk due to tripping of 33kV Bay-29

Unit no.	Capacity in MW	Outage		Synchronization		Reason of Outage
		Date	Time	Date	Time	
5	60	04.05.09	20.56	11.05.09	05.15	Fire in PA Fan
		15.05.09	23.18	16.05.09	07.40	Problem in RC Feeder
		18.05.09	13.10	05.07.09	03.45	ID Fan Problem
		05.07.09	07.00	08.07.09	02.35	Boiler Tube Leakage
		08.07.09	10.30	12.07.09	03.24	Condenser Tube Leakage
		13.07.09	06.50	13.07.09	07.05	Drum level high
		13.07.09	07.50	13.07.09	23.25	Shortage of DM water
		14.07.09	09.42	14.07.09	18.55	Due to tripping of associated transmission lines
		26.07.09	16.02	28.07.09	20.05	Condenser Tube Leakage
		29.07.09	12.12.	29.07.09	12.55	Auxiliary supply failure
		31.07.09	07.35	31.07.09	08.35	Fire out
		06.08.09	20.48	11.08.09	08.30	Condenser Tube Leakage
		11.08.09	08.35	11.08.09	09.08	Low Vacuum
		15.08.09	05.02	15.08.09	17.10	Maintenance work
		17.08.09	11.28	19.08.09	18.50	Problem in coal bunker
		21.08.09	13.27	21.08.09	13.55	Tripped due to jerk
		23.08.09	21.01	29.08.09	22.50	Shortage of DM Water

(B) RPH STATION

Unit No	Capacity in MW	Outage		Synchronization		Reason of Outage
		Date	Time	Date	Time	
1	67.5	05.04.09	07.05	05.04.09	08.05	Bus Bar Protection Operated
		10.04.09	08.48	10.04.09	19.33	Condenser Tube Leakage
		09.05.09	03.16	09.05.09	09.46	Cooling Line Problem
		12.05.09	20.05	13.05.09	14.26	Turbine Vibration High
		22.05.09	14.39	22.05.09	10.02	Tripped due to tripping of associated transmission lines
		01.06.09	09.24	01.06.09	10.35	
		05.06.09	15.10	05.06.09	17.16	
		15.06.09	13.35	15.06.09	15.20	
		29.06.09	15.40	29.06.09	20.50	
		03.07.09	01.20	06.07.09	14.20	Thrust bearing maintenance.
		06.07.09	23.33	07.07.09	15.22	Condenser Vacuum low
		07.07.09	20.09	07.07.09	20.42	Flam failure
		14.07.09	09.42	14.07.09	14.48	Tripped due to tripping of associated transmission lines
		15.07.09	22.30	18.07.09	11.05	Condenser Tube Leakage
		18.07.09	11.20	18.07.09	12.05	Boiler Flame Failure
		28.07.09	15.27	28.07.09	16.22	Flame Failure
		28.07.09	18.03	28.07.09	18.39	Flame Failure
		30.07.09	10.52	31.07.09	11.40	Condenser Tube Leakage
		31.07.09	12.32	31.07.09	13.15	Drum level high
		01.08.09	07.52	01.08.09	08.55	Jerk due to appearance of money in yard
		01.08.09	18.20	01.08.09	19.01	Flame failure
		02.08.09	15.19	02.08.09	15.45	Flame failure
		07.08.09	10.44	07.08.09	11.31	Flame failure
		09.08.09	03.55	09.08.09	04.25	Flame failure
		21.08.09	14.34			Buchloz Relay operated
		23.08.09	19.31	23.08.09	20.07	Bumer Pressure High
		25.08.09	17.50	25.08.09	18.25	High Furnace pressure.
27.08.09	17.35	27.08.09	20.30	Boiler flame failure		

Unit no.	Capacity in MW	Outage		Synchronization		Reason of Outage
		Date	Time	Date	Time	
2	67.5	05.04.09	07.05	05.04.09	08.05	Bus Bar Protection Operated
		09.04.09	02.26	09.04.09	23.20	Boiler Tube Leakage
		25.04.09	19.30	25.04.09	21.52	Shaft Vibration High
		08.05.09	08.54	09.05.09	10.05	Condenser Tube Leakage
		11.05.09	20.49	11.05.09	22.10	Turbine Vibration high
		20.05.09	10.04	20.05.09	12.05	Turbine Vibration high
		22.05.09	14.39	23.05.09	00.41	Tripped due to tripping of associated transmission lines
		01.06.09	09.24	01.06.09	11.10	
		01.06.09	11.42	01.06.09	13.20	Low vacuum
		05.06.09	15.10	05.06.09	17.45	Tripped due to tripping of associated transmission lines
		07.06.09	07.25	07.06.09	21.06	To check Turbine in Auxiliary
		15.06.09	13.35	15.06.09	15.27	Tripped due to tripping of associated transmission lines
		06.07.09	23.34	07.07.09	15.20	Condenser Vacuum low
		10.07.09	22.08	10.07.09	23.08	Condenser Vacuum low
		14.07.09	09.42	14.07.09	15.20	Tripped due to tripping of associated transmission lines
		18.07.09	20.20	19.07.09	11.45	Electrical Fault
		01.08.09	01.15	03.08.09	05.58	Condenser Tube Leakage
		21.08.09	16.28	21.08.09	18.54	Furnace Pressure High
		27.08.09	17.51	27.08.9	22.08	Tripped due to tripping of associated transmission lines
		28.08.09	00.18	28.08.09	01.33	Turbine Tripped
28.08.09	03.16	28.08.09	04.33	Turbine Tripped		
28.08.09	03.57	29.08.09	04.15	Turbine Tripped		
29.08.09	12.25	30.08.09	00.38	Condenser Tube Leakage		
31.08.09	18.03	31.08.09	19.07	Low Vacuum		

(C) Gas Turbine

Unit No	Capacity in MW	Outage		Synchronization		Reason of Outage
		Date	Time	Date	Time	
1	30	15.04.09	16.15	16.04.09	22.55	To avoid overloading on 100 MVA Tr
		05.05.09	08.01	05.05.09	13.00	
		05.05.09	13.00	05.05.09	19.45	For installing the ABT Meter.
		12.06.09	15.15	12.06.09	15.44	FSNL due to tripping of 160 MVA Tx at both end
		28.06.09	06.02	29.06.9	00.28	To attend HSD leakage from the Nozzles.
		08.07.09	23.54	09.07.09	02.07	Tripped due to combined cycle trip alarm.
		09.07.09	11.40	17.07.09	08.55	To attend the GT duct for HRSG# 1.
		17.07.09	13.16	17.07.09	16.14	Tripped on Emergency manual trip alarm
		19.07.09	05.29	19.07.09	07.20	Tripped due to blast in the breaker of 5 MVA in switch gear room..
		21.08.09	16.49	21.08.09	18.11	SF6 gas pressure low
		23.08.09	06.05	23.08.09	21.10	Gas Restriction
		28.08.09	04.32	28.08.09	05.45	Exhaust Temperature High

Unit No	Capacity in MW	Outage		Synchronization		Reason of Outage
		Date	Time	Date	Time	
2	30	02.04.09	12.47	03.04.09	05.55	Gas Restriction
		08.04.09	12.02	30.04.09	24.00	Major Overhauling
		01.05.09	00.00	19.05.09	13.35	Stopped for Major Inspection.
		22.05.09	20.10	23.05.09	21.50	Swapping of gas to PPCL
		24.05.09	11.05	26.05.09	14.20	Available on Open Cycle
		28.05.09	01.05	28.05.09	11.38	Gas Restriction
		28.05.09	12.00	28.05.09	13.14	Gas Restriction
		30.0.09	12.55	30.05.09	19.58	Gas Restriction
		30.05.09	22.32	31.05.09	23.59	Gas Restriction
		01.06.09	00.00	01.06.09	19.42	Gas Restriction
		03.06.09	05.50	03.06.09	17.14	Gas Restriction
		04.06.09	06.32	04.06.09	09.35	Gas Restriction
		05.06.09	11.30	05.06.09	19.35	Gas Restriction
		07.06.09	01.48	07.06.09	18.45	Gas Restriction
		08.06.09	00.10	08.06.09	18.20	To attending Leakages
		09.06.09	00.02	09.06.09	10.35	To attending Leakages
		10.06.09	07.09	10.06.09	17.50	To attending Leakages
		11.06.09	07.47	11.06.09	19.55	To attending Leakages
		12.06.09	03.02	15.06.09	19.20	Swapping of gas to PPCL
		16.06.09	06.02	16.06.09	15.25	Swapping of gas to PPCL
		16.06.09	15.55	16.06.09	20.45	Exhaust Temperature high
		16.06.09	20.45	17.06.09	01.20	Gas Restriction
		17.06.09	01.32	17.06.09	10.27	Exhaust Temperature high
		17.06.09	11.30	17.06.09	14.32	Gas Restriction
		18.06.09	00.02	21.06.09	11.20	Swapping of gas to PPCL
		24.06.09	00.32	25.06.09	09.50	Swapping of gas to PPCL
		26.06.09	22.25	26.06.09	22.55	Exhaust Temperature high
		30.06.09	20.20	02.07	14.05	Gas Restriction
		02.07.09	18.32	03.07.09	03.15	Gas Restriction
		03.07.09	18.02	03.07.09	23.50	Gas Restriction
		04.07.09	01.05	04.07.09	16.10	Gas Restriction
		19.07.09	05.29	19.07.09	06.38	Due to blast in the breaker of 5 MVA in switch gear room..
22.07.09	04.04	23.07.09	13.20	To attend lube oil leakages.		
04.08.09	07.25	04.08.09	08.13	Tripped while changing over from Gas to liquid fuel as the Distillite fuel pump-1 did not start on Auto.		
05.08.09	15.04	05.08.09	15.40	Exhaust Temperature High		
23.08.09	21.15	23.08.09	23.11	Gas Restriction		
23.08.09	23.11	31.08.09	23.59	High vibration at 1800 RPM		
3	30	29.04.09	00.50	29.04.09	03.29	LTTH High
		07.05.09	09.02	07.05.09	22.23	Swapping of gas to PPCL
		17.05.09	12.42	17.05.09	17.42	Lube oil temperature high
		19.05.09	12.45	22.05.09	19.40	Swapping of gas to PPCL
		02.06.09	00.25	02.06.09	19.28	Swapping of gas to PPCL
		09.06.09	23.02	10.06.09	06.52	Swapping of gas to PPCL
		12.06.09	00.00	12.06.09	12.13	Swapping of gas to PPCL
		12.06.09	15.15	12.06.09	20.07	Due to tripping of 160 MVA Tx at both end
		15.06.09	13.30	15.06.09	14.45	
16.06.09	19.10	17.06.09	09.45	Swapping of gas to PPCL		



Unit No	Capacity in MW	Outage		Synchronization		Reason of Outage
		Date	Time	Date	Time	
3	30	17.06.09	19.45	18.06.09	12.55	Swapping of gas to PPCL
		21.06.09	12.30	22.06.09	00.28	Swapping of gas to PPCL
		22.06.09	03.00	22.06.09	09.57	Swapping of gas to PPCL
		22.06.09	22.15	23.06.09	12.40	Swapping of gas to PPCL
		29.06.09	11.45	29.06.09	19.27	To attend leakage in HRSG#3
		30.06.09	01.32	30.06.09	11.55	Swapping of gas to PPCL
		30.06.09	23.30	01.07.09	05.58	Swapping of gas to PPCL
		07.07.09	05.42	07.07.09	13.47	Malfunctioning of Battery Charger.
		19.07.09	05.29	19.07.09	08.50	Due to blast in the breaker of 5 MVA in switch gear room.
		27.07.09	20.50	27.07.09	23.07	Tripped on loss of flame.
		15.08.09	10.15	15.08.09	20.55	Gas Restriction
		21.08.09	14.38	21.08.09	16.58	Loss of flame
		31.08.09	21.50	31.08.09	23.59	Tripped without any Audio alarm.
4	30	10.04.09	11.32	10.04.09	15.20	Gas Restriction
		08.05.09	09.10	09.05.09	01.20	Swapping of gas to PPCL
		10.05.09	17.24	10.05.09	20.25	High exhaust temperature
		13.05.09	22.10	13.05.09	23.59	Swapping of gas to PPCL
		24.05.09	11.05	25.05.09	21.20	Gas Restriction
		31.05.09	08.35	31.05.09	08.42	To close 66 KV Bus Coupler.
		13.06.09	06.10	13.06.09	18.20	Swapping of gas to PPCL
		14.06.09	15.04	16.06.09	02.38	Swapping of gas to PPCL
		26.06.09	01.100	26.06.09	13.27	Swapping of gas to PPCL
		04.07.09	16.25	05.07.09	20.02	Swapping of gas to PPCL
		05.07.09	20.28	07.07.09	19.50	Lube oil pressure low
		13.07.09	16.03	28.07.09	15.28	High exhaust temperature
		11.08.09	13.55	11.08.09	18.50	Electrical trouble
		21.08.09	16.39	21.08.09	18.37	Electrical trouble
21.08.09	18.40	21.08.09	22.15	Electrical trouble		
5	30	18.04.09	06.02	18.04.09	11.45	HRSG Leakage
		24.04.09	08.02	24.04.09	19.30	Due to planned shut-down of 220/66kV 160MVA Pr. Tr.
		26.04.09	09.35	26.04.09	21.18	
		09.05.09	00.56	09.05.09	17.25	C&I Problem
		10.05.09	14.52	10.05.09	17.15	High exhaust temp.
		31.05.09	08.32	31.05.09	12.38	To close 66 KV Bus Coupler
		15.06.09	13.30	15.06.09	15.10	Due to tripping of 100 MVA Tx.
		16.07.09	11.45	16.07.09	23.05	C&I problem
		19.07.09	05.29	19.07.09	06.45	Due to blast in the breaker of 5 MVA in switch gear room..
6	30	29.04.09	17.26	29.04.09	22.55	Electrical Fault
		09.05.09	14.32	09.05.09	23.59	To install ABT -complaint meters.
		10.05.09	15.35	10.05.09	16.43	Tripped without out any alarm
		11.05.09	22.02	12.05.09	17.44	Swapping of gas to PPCL
		16.05.09	00.32	16.05.09	13.46	Swapping of gas to PPCL
		26.05.09	14.31	26.05.09	17.50	To replace Gen. differential relay.
		31.05.09	08.35	31.05.09	08.42	To close 66 KV Bus Coupler.
		15.06.09	13.30	15.06.09	14.10	Due to tripping of 100 MVA Tx at both end.

Unit No	Capacity in MW	Outage		Synchronization		Reason of Outage
		Date	Time	Date	Time	
6	30	30.06.09	2330	01.07.09	06.42	Swapping of gas to PPCL
		12.07.09	02.40	12.07.09	14.25	Loss of Excitation
		19.07.09	13.28	19.07.09	13.50	FSNL due to Gen. Over heating alarm appearing on protection panel
		19.07.09	17.50	19.07.09	18.35	
		29.07.09	15.40	29.07.09	20.25	Electrical Problem
		21.08.09	16.37	22.08.09	19.40	Tripped on preignition pressure p-2 high and Battery ground alarm
STG1	34	06.04.09	10.30	08.04.09	12.00	BTL
		21.04.09	00.05	22.04.09	21.10	Maintenance work
		28.04.09	08.33	29.04.09	16.20	HRSO Leakage
		30.04.09	11.58	30.04.09	12.28	AVR System Problem
		01.05.09	16.58	01.05.09	20.33	Tripped due to CEP 1-A tripped.
		03.05.09	23.10	04.05.09	04.40	Tripped due to disappearance of drum parameters
		05.05.09	08.01	06.05.09	01.05	Stopped due to stopping of GT-1 since only HRSO-I in service.
		13.05.09	11.20	13.05.09	14.27	Tripped while change over of Auxiliary supply from 7.5 MVA to 20 MVA.
		13.05.09	18.06	13.05.09	19.40	Tripped on false alarm of HRSO# I tripping.
		22.05.09	19.42	22.05.09	22.05	Malfunctioning of parameters
		31.05.09	08.35	31.05.09	21.28	Failure of 800 KVA transformer.
		02.06.09	18.13	02.06.09	19.20	Due to tripping of BFP-1A & HRSO# 1 & 2.
		06.06.09	22.02	07.06.09	23.40	Stopped to attend various leakages.
		12.06.09	15.15	12.06.09	16.53	Due to tripping of 160 MVA Tx at both end
		15.06.09	13.30	15.06.09	14.42	Due to tripping of 100 MVA Tx.
		20.06.09	06.02	20.06.09	23.48	Stopped to attend various leakages.
		26.06.09	04.05	26.06.09	04.25	Tripped on low ho twell level
		30.06.09	13.00	30.06.09	20.05	To attend leakage at PRDS station
		09.07.09	04.45	09.07.09	08.20	Due to malfunctioning of parameters
		14.07.09	00.05	17.07.09	17.25	Toto attend tube leakage in HRSO#2
		19.07.09	05.29	19.07.09	07.58	Due to blast in the breaker of 5 MVA in switch gear room..
		21.07.09	08.38	21.07.09	09.28	Tripped due to tripping of 800 KVA transformer on instantaneous O/C
		28.07.09	18.05	28.07.09	18.26	Due to tripping of 7.5 MVA Tx
		09.08.09	17.55	09.08.09	19.47	Tripped due to alarm of GT-1 Tripped appeared on STG# I BCD which led to tripping of HRSO- I & subsequently STG# I.
		23.08.09	00.05	24.08.09	19.10	To attend PRDS leakage.
		26.08.09	02.15	26.08.09	05.05	Tripped due to Closing of MS-1 Valve
		26.08.09	18.05	26.08.09	19.52	Channel-I & II operated.
		27.08.09	08.15	27.08.09	12.55	Tripped though all the parameters were normal at BCD.
		27.08.09	15.05	27.08.09	20.50	Control Oil pressure very low
		28.08.09	04.32	28.08.09	06.35	Tripped due to tripping of GT# 1.

Unit No	Capacity in MW	Outage		Synchronization		Reason of Outage
		Date	Time	Date	Time	
STG2	34	07.04.09	00.05	08.04.09	22.02	To attend leakage
		10.04.09	02.02	10.04.09	02.40	Class A relay group-2 operated
		30.04.09	11.58	30.04.09	12.28	Class 'B' trip relay operated& 40G
		06.05.09	09.05	06.05.09	21.06	To install ABT -complaint meters.
		13.05.09	11.20	13.05.09	11.40	Tripped while change over of Auxiliary supply from 7.5 MVA to 20 MVA.
		29.05.09	19.24	29.05.09	20.20	Tripped due to following relay i) Generator class-A group-II 86GA-2.
		29.05.09	20.31	29.05.09	21.55	
		31.05.09	07.37	31.05.09	09.55	Due to tripping of 100 MVA Tx-II.
		02.06.09	17.09	02.06.09	19.05	Due to tripping of HRSG# 4.
		15.06.09	13.30	15.06.09	17.05	Due to tripping of 100 MVA Tx.
		07.07.09	05.44	07.07.09	15.28	Tripped due to tripping of GT# 3
		19.07.09	05.29	19.07.09	12.08	Due to blast in the breaker of 5 MVA in switch gear room.
		21.07.09	08.38	21.07.09	09.18	Tripped due to tripping of 800 KVA transformer on instantaneous O/C
		23.07.09	12.27	23.07.09	13.13	Tripped without any abnormality of system.
		27.07.09	20.50	28.07.09	00.28	Tripped due to tripping of GT# 3 which is tripped on loss of flame.
		28.07.09	18.05	28.07.09	18.20	Due to tripping of 7.5 MVA Tx.
		31.07.09	13.32	31.07.09	19.15	To attend the condensate water transfer problem from hot well to deaerator.
		15.08.09	21.25	15.08.09	22.28	Drum level very high.
		16.08.09	13.32	16.08.09	14.15	Due to tripping of BFP-2B.
		21.08.09	16.39	21.08.09	17.52	Due to tripping of GT#4.
26.08.09	14.10	27.08.09	23.59	Shortage of DM water		
STG3	34	05.05.09	16.15	05.05.09	16.50	To install ABT -complaint meters.
		09.05.09	09.02	09.05.09	21.25	To attend leakages
		10.05.09	15.35	10.05.09	19.15	Due to tripping of GT No. 6.
		11.05.09	17.42	11.05.09	18.35	Tripped due to disappearance of hot well level parameters.
		13.05.09	11.20	13.05.09	12.40	Tripped while change over of Auxiliary supply from 7.5 MVA to 20 MVA.
		31.05.09	08.35	31.05.09	10.29	Due to failure of 800 KVA Tx
		12.06.09	15.15	12.06.09	18.20	Tripped due to 160 MVA Tx at both end
		15.06.09	13.30	15.06.09	16.12	Due to tripping of 100 MVA Tx.
		19.07.09	05.29	19.07.09	08.28	Due to blast in the breaker of 5 MVA in switch gear room..
		21.07.09	08.38	21.07.09	09.35	Tripped due to tripping of 800 KVA transformer on instantaneous O/C
		23.07.09	14.02	23.07.09	21.50	Generator class -A relay operated.
		28.07.09	18.05	28.07.09	18.35	Due to tripping of 7.5 MVA Tx.
		28.08.09	03.10	31.08.09	23.59	Tripped manually for safety reason due to increase in axial shift pre trip alarm appeared on BCD

**(D) PRAGATI STATION**

Unit No	Capacity in MW	Outage		Synchronization		Reason of Outage
		Date	Time	Date	Time	
1	104	18.04.09	15.42	18.04.09	16.26	Tripped due to jerk
		27.04.09	10.48	28.04.09	13.25	Hydraulic Pressure Low
		19.05.09	20.55	19.05.09	22.17	Tripped due to tripping of associated transmission lines
		25.05.09	21.29	25.05.09	22.56	
		05.06.09	02.48	05.06.09	10.07	
		03.07.09	07.28	03.07.09	12.27	
		04.07.09	11.42	04.07.09	12.01	
		06.07.09	14.10	06.07.09	14.28	
		14.07.09	09.42	14.07.09	10.18	
		05.08.09	16.15	05.08.09	17.37	
		10.08.09	19.09	10.08.09	19.25	
		12.08.09	15.15	12.08.09	16.31	
		20.08.09	21.16	22.08.09	11.02	Internal Fault
		22.08.09	18.17	22.08.09	20.10	Internal Fault
		27.08.09	18.22	27.08.09	18.26	Tripped due to tripping of associated transmission lines
2	104	19.04.09	10.29	19.04.09	11.27	Tripped due to tripping of associated transmission lines
		19.05.09	20.55	19.05.09	22.07	
		22.05.09	14.39	22.05.09	14.28	
		22.05.09	15.36	22.05.09	15.51	
		01.06.09	09.26	01.06.09	09.52	
		04.06.09	00.00	05.06.09	05.26	Shut-down
		05.06.09	15.06	05.06.09	17.21	Tripped due to tripping of associated transmission lines
		15.06.09	13.35	15.06.09	14.20	
		15.07.09	00.30	17.08.09	19.50	Shut-down.
		17.08.09	23.54	18.08.09	04.00	Tripped due to tripping of associated transmission lines
		21.08.09	14.42	21.08.09	15.27	
		27.08.09	17.53	27.08.09	19.18	
STG	122	07.04.09	06.34	07.04.09	07.45	Tripped due to tripping of associated transmission lines
		19.04.09	10.29	19.04.09	12.41	
		26.04.09	07.11	28.04.09	13.25	Tripped due to tripping of associated transmission lines
		16.05.09	18.44	16.05.09	20.24	
		19.05.09	20.55	19.05.09	23.20	
		22.05.09	14.39	22.05.09	15.39	
		01.06.09	09.26	01.06.09	10.41	
		04.06.09	11.25	04.06.09	15.32	Oil leakage from ESU
		05.06.09	15.06	05.06.09	16.40	Tripped due to tripping of associated transmission lines
		15.06.09	13.35	15.06.09	15.20	
		14.07.09	09.42	14.07.09	10.42	
		15.07.09	11.56	15.07.09	12.50	Problem in Boiler feed pump
		10.08.09	19.10	10.08.09	20.14	Tripped due to tripping of associated transmission lines
		12.08.09	15.15	12.08.09	17.20	
		18.08.09	00.15	18.08.09	01.55	Internal Fault
21.08.09	14.43	21.08.09	16.17	Tripped due to tripping of associated transmission lines		
27.08.09	17.53	27.08.09	20.20			

**(E) BADARPUR THERMAL POWER STATION**

Unit	Capacity in MW	Outage		Synchronization		Reason of Outage
		Date	Time	Date	Time	
1	95	30.07.09	06.45	14.09.09	17.00	Planned shut-down for major overhauling
2	95	10.05.09	13.12	10.05.09	15.15	Bus differential operated
		16.07.09	17.42	18.07.09	05.25	Boiler Tube Leakage
		29.07.09	17.56	30.07.09	22.30	Furnace Failure
		11.08.09	21.29	11.08.09	22.50	Furnace problem
		30.08.09	14.50	31.08.09	11.00	DC Control failure
3	95	12.04.09	05.34	12.04.09	19.43	Electrical problem
		13.04.09	17.22	13.04.09	20.45	Electrical problem
		25.04.09	22.43	27.04.09	22.47	Planned Shut-down
		26.05.09	20.54	27.05.09	17.45	Boiler Tube Leakage
4	210	01.04.09	12.18	17.04.09	23.59	Planned Shut-Down for overhauling
		18.04.09	12.35	18.04.09	15.48	Tripped along with tripping of 220kV BTPS – Noida Ckt.
		18.05.09	13.12	10.05.09	22.13	Bus differential operated
		10.06.09	16.44	11.06.09	16.58	Boiler Tube Leakage
		19.06.09	09.52	20.06.09	09.23	Boiler Tube Leakage
5	210	07.08.09	17.43	07.08.09	19.40	Furnace Protection.

#### 4 ALLOCATION OF POWER TO DELHI

##### A) Allocation from Central Sector Generating Stations to Delhi w.e.f. 29.07.09 to 22.08.09

##### i) TIME BLOCK - 00.00hrs & 12.00hrs. and 23.00-24.00hrs @ 0%

All figures in MW

Name of the Stn	Installed capacity	Total Un-allocated	Basic Allocation	Basic Allocation at periphery	Allocation out of Unallocated Quota	Allocation out of Un-allocated Quota at Delhi periphery	Total allocation at Delhi periphery
1	2	3	4	5	6	7	(8)=(5)+(7)
<b>NTPC STATIONS</b>							
Singrauli STPS	2000	300	150	130	0	0	130
Rihand	1000	150	100	87	0	0	87
Rihand Stage -II	1000	150	126	109	0	0	109
ANTA GPS	419	63	44	41	0	0	41
Auriya GPS	663.36	99	72	67	0	0	67
Dadri GPS	829.78	129	91	85	0	0	85
Dadri NCTPS (Th)	840	0	756	657	0	0	657
Unchahaar-I TPS	420	20	24	21	0	0	21
Unchahaar-II TPS	420	63	47	41	0	0	41
Unchahaar-III TPS	210	31	29	25	0	0	25
<b>TOTAL</b>	<b>7802</b>	<b>1005</b>	<b>1439</b>	<b>1263</b>	<b>0</b>	<b>0</b>	<b>1263</b>
<b>NHPC</b>							
Baira Suil HPS	180	0	20	19	0	0	19
Salal HPS	690	0	80	76	0	0	76
Tanakpur HEP	94	0	12	11	0	0	11
Chamera HEP	540	0	43	41	0	0	41
Chamera-II HEP	300	54	40	38	0	0	38
URI HEP	480	0	53	50	0	0	50
Dhuali Ganga HEP	280	42	37	35	0	0	35
Dulhasti HEP	390	58	50	48	0	0	48
<b>TOTAL</b>	<b>2954</b>	<b>154</b>	<b>335</b>	<b>318</b>	<b>0</b>	<b>0</b>	<b>318</b>
<b>NPC</b>							
Narora APS	440	64	47	41	0	0	41
RAPP(B) Unit-3 APS	220	33	0	0	0	0	0
RAPP(B) Unit-4 APS	220	33	0	0	0	0	0
<b>TOTAL</b>	<b>880</b>	<b>130</b>	<b>47</b>	<b>41</b>	<b>0</b>	<b>0</b>	<b>41</b>
<b>SVJNL</b>							
Nathpa Jhakri HEP	1500	149	142	123	0	0	123
<b>THDC</b>							
Tehri Hydro	1000	99	103	89	0	0	89
<b>Total</b>	<b>14136</b>	<b>1537</b>	<b>2066</b>	<b>1835</b>	<b>0</b>	<b>0</b>	<b>1835</b>
<b>Allocation from ER and Tala HEP</b>							
Farakka	1600	0	30	25	0	0	25
Kahalgaon	840	0	63	53	0	0	53
Talchar	1000	0	0	0	0	0	0
Tala HEP	1020	153	30	25	0	0	25
Mejia TPS Unit-6	250	0	29	25	0	0	25
Kahalgaon-II	1000	0	108	90	0	0	90
<b>Total ER</b>	<b>5710</b>	<b>153</b>	<b>260</b>	<b>217</b>	<b>0</b>	<b>0</b>	<b>217</b>
<b>Grand Total</b>	<b>19846</b>	<b>1690</b>	<b>2326</b>	<b>2052</b>	<b>0</b>	<b>0</b>	<b>2052</b>

ii) Time Block 12.00hrs. to 19hrs. @ 20%

All figures in MW

Name of the Stn	Installed capacity	Total Un-allocated	Basic Allocation	Basic Allocation at periphery	Allocation out of Unallocated Quota	Allocation out of Un-allocated Quota at Delhi periphery	Total allocation at Delhi periphery
1	2	3	4	5	6	7	(8)=(5)+(7)
<b>NTPC STATIONS</b>							
Singrauli STPS	2000	300	150	130	60	52	182
Rihand	1000	150	100	87	30	26	113
Rihand Stage -II	1000	150	126	109	30	26	136
ANTA GPS	419	63	44	41	13	12	53
Auriya GPS	663.36	99	72	67	14	13	80
Dadri GPS	829.78	129	91	85	12	11	96
Dadri NCTPS (Th)	840	0	756	657	0	0	657
Unchahaar-I TPS	420	20	24	21	4	3	24
Unchahaar-II TPS	420	63	47	41	13	11	52
Unchahaar-III TPS	210	31	29	25	6	5	31
<b>TOTAL</b>	<b>7802</b>	<b>1005</b>	<b>1439</b>	<b>1263</b>	<b>180</b>	<b>159</b>	<b>1422</b>
<b>NHPC</b>							
Baira Suil HPS	180	0	20	19	0	0	19
Salal HPS	690	0	80	76	0	0	76
Tanakpur HEP	94	0	12	11	0	0	11
Chamera HEP	540	0	43	41	0	0	41
Chamera-II HEP	300	54	40	38	11	10	48
URI HEP	480	0	53	50	0	0	50
Dhaulti Ganga HEP	280	42	37	35	8	8	43
Dulhasti HEP	390	58	50	48	12	11	59
<b>TOTAL</b>	<b>2954</b>	<b>154</b>	<b>335</b>	<b>318</b>	<b>31</b>	<b>29</b>	<b>347</b>
<b>NPC</b>							
Narora APS	440	64	47	41	13	11	52
RAPP(B) Unit-3 APS	220	33	0	0	6	5	5
RAPP(B) Unit-4 APS	220	33	0	0	6	5	5
<b>TOTAL</b>	<b>880</b>	<b>130</b>	<b>47</b>	<b>41</b>	<b>24</b>	<b>21</b>	<b>62</b>
<b>SVJNL</b>							
Nathpa Jhakri HEP	1500	149	142	123	30	28	152
<b>THDC</b>							
Tehri Hydro	1000	99	103	89	20	19	108
<b>Total</b>	<b>14136</b>	<b>1537</b>	<b>2066</b>	<b>1835</b>	<b>285</b>	<b>256</b>	<b>2091</b>
<b>Allocation from ER and Tala HEP</b>							
Farakka	1600	0	30	25	0	0	25
Kahalgaoon	840	0	63	53	0	0	53
Talchar	1000	0	0	0	0	0	0
Tala HEP	1020	153	30	25	0	0	25
Mejia TPS Unit-6	250	0	29	25	0	0	25
Kahalgaoon-II	1000	0	108	90	12	10	100
<b>Total ER</b>	<b>5710</b>	<b>153</b>	<b>260</b>	<b>217</b>	<b>12</b>	<b>10</b>	<b>227</b>
<b>Grand Total</b>	<b>19846</b>	<b>1690</b>	<b>2326</b>	<b>2052</b>	<b>296</b>	<b>266</b>	<b>2318</b>

iii) Time Block 19.00hrs. to 23hrs. @ 22%

All figures in MW

Name of the Stn	Installed capacity	Total Un-allocated	Basic Allocation	Basic Allocation at periphery	Allocation out of Unallocated Quota	Allocation out of Un-allocation Quota at Delhi periphery	Total allocation at Delhi periphery
1	2	3	4	5	6	7	(8)=(5)+(7)
Singrauli STPS	2000	300	150	130	66	57	188
Rihand	1000	150	100	87	33	28	115
Rihand Stage-II	1000	150	126	109	33	29	138
ANTA GPS	419	63	44	41	14	13	54
Auriya GPS	663.36	99	72	67	15	14	81
Dadri GPS	829.78	129	91	85	13	12	97
Dadri NCTPS (Th)	840	0	756	657	0	0	657
Unchahaar-I TPS	420	20	24	21	4	4	25
Unchahaar-II TPS	420	63	47	41	14	12	53
Unchahaar-III TPS	210	31	29	25	7	6	31
<b>TOTAL</b>	<b>7802</b>	<b>1005</b>	<b>1439</b>	<b>1263</b>	<b>199</b>	<b>175</b>	<b>1438</b>
<b>NHPC</b>							
Baira Suil HPS	180	0	20	19	0	0	19
Salal HPS	690	0	80	76	0	0	76
Tanakpur HEP	94	0	12	11	0	0	11
Chamera HEP	540	0	43	41	0	0	41
Chamera-II HEP	300	54	40	38	12	11	49
URI HEP	480	0	53	50	0	0	50
Dhuli Ganga HEP	280	42	37	35	9	9	44
Dulhasti HEP	390	58	50	48	13	12	60
<b>TOTAL</b>	<b>2954</b>	<b>154</b>	<b>335</b>	<b>318</b>	<b>34</b>	<b>32</b>	<b>350</b>
<b>NPC</b>							
Narora APS	440	64	47	41	14	12	53
RAPP(B) Unit-3 APS	220	33	0	0	7	6	6
RAPP(B) Unit-4 APS	220	33	0	0	7	6	6
<b>TOTAL</b>	<b>880</b>	<b>130</b>	<b>47</b>	<b>41</b>	<b>28</b>	<b>24</b>	<b>65</b>
<b>SVJNL</b>							
Nathpa Jhakri HEP	1500	149	142	123	33	31	154
<b>THDC</b>							
Tehri Hydro	1000	99	103	89	22	21	110
<b>Total</b>	<b>14136</b>	<b>1537</b>	<b>2066</b>	<b>1835</b>	<b>315</b>	<b>284</b>	<b>2119</b>
<b>Allocation from ER and Tala HEP</b>							
Farakka	1600	0	30	25	0	0	25
Kahalgaon	840	0	63	53	0	0	53
Talchar	1000	0	0	0	0	0	0
Tala HEP	1020	153	30	25	0	0	25
Meija TPS Unit-6	250	0	29	25	0	0	25
Kahalgaon-II	1000	0	108	90	13	11	101
<b>Total ER</b>	<b>5710</b>	<b>153</b>	<b>260</b>	<b>217</b>	<b>13</b>	<b>11</b>	<b>228</b>
<b>Grand Total</b>	<b>19846</b>	<b>1690</b>	<b>2326</b>	<b>2052</b>	<b>328</b>	<b>295</b>	<b>2346</b>



**B) Allocation from Central Sector Generating Stations to Delhi w.e.f. 22.08.09 to 30.08.09**  
**i) TIME BLOCK - 00.00hrs & 12.00hrs. and 23.00-24.00hrs @ 0%**

**All figures in MW**

Name of the Stn	Installed capacity	Total Un-allocated	Basic Allocation	Basic Allocation at periphery	Allocation out of Unallocated Quota	Allocation out of Un-allocated Quota at Delhi periphery	Total allocation at Delhi periphery
1	2	3	4	5	6	7	(8)=(5)+(7)
<b>NTPC STATIONS</b>							
Singrauli STPS	2000	300	150	130	0	0	130
Rihand	1000	150	100	87	0	0	87
Rihand Stage -II	1000	150	126	109	0	0	109
ANTA GPS	419	63	44	41	0	0	41
Auriya GPS	663.36	99	72	67	0	0	67
Dadri GPS	829.78	129	91	85	0	0	85
Dadri NCTPS (Th)	840	0	756	657	0	0	657
Unchahaar-I TPS	420	20	24	21	0	0	21
Unchahaar-II TPS	420	63	47	41	0	0	41
Unchahaar-III TPS	210	31	29	25	0	0	25
<b>TOTAL</b>	<b>7802</b>	<b>1005</b>	<b>1439</b>	<b>1263</b>	<b>0</b>	<b>0</b>	<b>1263</b>
<b>NHPC</b>							
Baira Suil HPS	180	0	20	19	0	0	19
Salal HPS	690	0	80	76	0	0	76
Tanakpur HEP	94	0	12	11	0	0	11
Chamera HEP	540	0	43	41	0	0	41
Chamera-II HEP	300	54	40	38	0	0	38
URI HEP	480	0	53	50	0	0	50
Dhaulti Ganga HEP	280	42	37	35	0	0	35
Dulhasti HEP	390	58	50	48	0	0	48
<b>TOTAL</b>	<b>2954</b>	<b>154</b>	<b>335</b>	<b>318</b>	<b>0</b>	<b>0</b>	<b>318</b>
<b>NPC</b>							
Narora APS	440	64	47	41	0	0	41
RAPP(B) Unit-3 APS	220	33	0	0	0	0	0
RAPP(B) Unit-4 APS	220	33	0	0	0	0	0
<b>TOTAL</b>	<b>880</b>	<b>130</b>	<b>47</b>	<b>41</b>	<b>0</b>	<b>0</b>	<b>41</b>
<b>SVJNL</b>							
Nathpa Jhakri HEP	1500	149	142	123	0	0	123
<b>THDC</b>							
Tehri Hydro	1000	99	103	89	0	0	89
<b>Total</b>	<b>14136</b>	<b>1537</b>	<b>2066</b>	<b>1835</b>	<b>0</b>	<b>0</b>	<b>1835</b>
<b>Allocation from ER and Tala HEP</b>							
Farakka	1600	0	30	25	0	0	25
Kahalgaon	840	0	63	53	0	0	53
Talchar	1000	0	0	0	0	0	0
Tala HEP	1020	153	30	25	0	0	25
Mejia TPS Unit-6	250	0	29	25	0	0	25
Kahalgaon-II	1000	0	108	90	0	0	90
<b>Total ER</b>	<b>5710</b>	<b>153</b>	<b>260</b>	<b>217</b>	<b>0</b>	<b>0</b>	<b>217</b>
<b>Grand Total</b>	<b>19846</b>	<b>1690</b>	<b>2326</b>	<b>2052</b>	<b>0</b>	<b>0</b>	<b>2052</b>

ii) Time Block 12.00hrs. to 19hrs. @ 18.18%

All figures in MW

Name of the Stn	Installed capacity	Total Un-allocated	Basic Allocation	Basic Allocation at periphery	Allocation out of Unallocated Quota	Allocation out of Un-allocated Quota at Delhi periphery	Total allocation at Delhi periphery
1	2	3	4	5	6	7	(8)=(5)+(7)
<b>NTPC STATIONS</b>							
Singrauli STPS	2000	300	150	130	55	47	178
Rihand	1000	150	100	87	27	24	110
Rihand Stage -II	1000	150	126	109	27	24	133
ANTA GPS	419	63	44	41	11	11	52
Auriya GPS	663.36	99	72	67	13	12	79
Dadri GPS	829.78	129	91	85	11	10	95
Dadri NCTPS (Th)	840	0	756	657	0	0	657
Unchahaar-I TPS	420	20	24	21	4	3	24
Unchahaar-II TPS	420	63	47	41	11	10	51
Unchahaar-III TPS	210	31	29	25	6	5	30
<b>TOTAL</b>	<b>7802</b>	<b>1005</b>	<b>1439</b>	<b>1263</b>	<b>164</b>	<b>145</b>	<b>1408</b>
<b>NHPC</b>							
Baira Suil HPS	180	0	20	19	0	0	19
Salal HPS	690	0	80	76	0	0	76
Tanakpur HEP	94	0	12	11	0	0	11
Chamera HEP	540	0	43	41	0	0	41
Chamera-II HEP	300	54	40	38	10	9	47
URI HEP	480	0	53	50	0	0	50
Dhaulti Ganga HEP	280	42	37	35	8	7	42
Dulhasti HEP	390	58	50	48	11	10	58
<b>TOTAL</b>	<b>2954</b>	<b>154</b>	<b>335</b>	<b>318</b>	<b>28</b>	<b>27</b>	<b>345</b>
<b>NPC</b>							
Narora APS	440	64	47	41	12	10	51
RAPP(B) Unit-3 APS	220	33	0	0	0	0	0
RAPP(B) Unit-4 APS	220	33	0	0	0	0	0
<b>TOTAL</b>	<b>880</b>	<b>130</b>	<b>47</b>	<b>41</b>	<b>12</b>	<b>10</b>	<b>51</b>
<b>SVJNL</b>							
Nathpa Jhakri HEP	1500	149	142	123	27	26	149
<b>THDC</b>							
Tehri Hydro	1000	99	103	89	18	17	107
<b>Total</b>	<b>14136</b>	<b>1537</b>	<b>2066</b>	<b>1835</b>	<b>249</b>	<b>224</b>	<b>2059</b>
<b>Allocation from ER and Tala HEP</b>							
Farakka	1600	0	30	25	0	0	25
Kahalgaon	840	0	63	53	0	0	53
Talchar	1000	0	0	0	0	0	0
Tala HEP	1020	153	30	25	0	0	25
Mejia TPS Unit-6	250	0	29	25	0	0	25
Kahalgaon-II	1000	0	108	90	11	9	99
<b>Total ER</b>	<b>5710</b>	<b>153</b>	<b>260</b>	<b>217</b>	<b>11</b>	<b>9</b>	<b>226</b>
<b>Grand Total</b>	<b>19846</b>	<b>1690</b>	<b>2326</b>	<b>2052</b>	<b>260</b>	<b>233</b>	<b>2285</b>

iii) Time Block 19.00hrs. to 23hrs. @ 20.18%

All figures in MW

Name of the Stn	Installed capacity	Total Un-allocated	Basic Allocation	Basic Allocation at periphery	Allocation out of Unallocated Quota	Allocation out of Un-allocation Quota at Delhi periphery	Total allocation at Delhi periphery
1	2	3	4	5	6	7	(8)=(5)+(7)
Singrauli STPS	2000	300	150	130	61	53	183
Rihand	1000	150	100	87	30	26	113
Rihand Stage-II	1000	150	126	109	30	26	136
ANTA GPS	419	63	44	41	13	12	53
Auriya GPS	663.36	99	72	67	14	13	80
Dadri GPS	829.78	129	91	85	12	11	96
Dadri NCTPS (Th)	840	0	756	657	0	0	657
Unchahaar-I TPS	420	20	24	21	4	4	24
Unchahaar-II TPS	420	63	47	41	13	11	52
Unchahaar-III TPS	210	31	29	25	6	5	31
<b>TOTAL</b>	<b>7802</b>	<b>1005</b>	<b>1439</b>	<b>1263</b>	<b>182</b>	<b>161</b>	<b>1424</b>
<b>NHPC</b>							
Baira Suil HPS	180	0	20	19	0	0	19
Salal HPS	690	0	80	76	0	0	76
Tanakpur HEP	94	0	12	11	0	0	11
Chamera HEP	540	0	43	41	0	0	41
Chamera-II HEP	300	54	40	38	11	10	48
URI HEP	480	0	53	50	0	0	50
Dhaulti Ganga HEP	280	42	37	35	8	8	43
Dulhasti HEP	390	58	50	48	12	11	59
<b>TOTAL</b>	<b>2954</b>	<b>154</b>	<b>335</b>	<b>318</b>	<b>31</b>	<b>30</b>	<b>348</b>
<b>NPC</b>							
Narora APS	440	64	47	41	13	11	52
RAPP(B) Unit-3 APS	220	33	0	0	7	6	6
RAPP(B) Unit-4 APS	220	33	0	0	7	6	6
<b>TOTAL</b>	<b>880</b>	<b>130</b>	<b>47</b>	<b>41</b>	<b>27</b>	<b>23</b>	<b>64</b>
<b>SVJNL</b>							
Nathpa Jhakri HEP	1500	149	142	123	30	29	152
<b>THDC</b>							
Tehri Hydro	1000	99	103	89	20	19	108
<b>Total</b>	<b>14136</b>	<b>1537</b>	<b>2066</b>	<b>1835</b>	<b>291</b>	<b>261</b>	<b>2096</b>
<b>Allocation from ER and Tala HEP</b>							
Farakka	1600	0	30	25	0	0	25
Kahalgaon	840	0	63	53	0	0	53
Talchar	1000	0	0	0	0	0	0
Tala HEP	1020	153	30	25	0	0	25
Meija TPS Unit-6	250	0	29	25	0	0	25
Kahalgaon-II	1000	0	108	90	12	10	100
<b>Total ER</b>	<b>5710</b>	<b>153</b>	<b>260</b>	<b>217</b>	<b>12</b>	<b>10</b>	<b>227</b>
<b>Grand Total</b>	<b>19846</b>	<b>1690</b>	<b>2326</b>	<b>2052</b>	<b>302</b>	<b>271</b>	<b>2323</b>

- 5 ALLOCATION OF POWER TO VARIOUS LICENCEES AS PER ORDER OF DERC AND DECISION OF GNCTD FOR ALLOCATION OF CENTRAL SECTOR STATIONS (EXCEPT DADRI THERMAL AND BTPS) AND STATE SECTOR GENERATING STATIONS w.e.f. 01.01.2009. ALLOCATION OF JHAJJHAR PLANT FROM IP STATION HAS BEEN REVISED TO 1.5MW FROM 0.9MW W.E.F. 01.01.09.

(Allocation In % )

SOURCES	LICENSEES					
	NDMC	MES	NDPL	BRPL	BYPL	TOTAL
1. Central Sector without Dadri (Th)	0.00	0.00	29.18	43.58	27.24	100.00
2. Dadri (Th)	14.05	0.00	25.09	34.65	26.21	100.00
3. BTPS	15.07	7.09	22.59	31.64	23.61	100.00
4. IP	0.00	0.00	30.01	38.78	31.21	100.00
5. RPH	0.00	0.00	30.05	38.54	31.41	100.00
6. GT	0.00	0.00	30.05	38.54	31.41	100.00
7. Pragati	25.76	0.00	20.95	31.41	21.80	100.00
8. DVC	0.00	0.00	29.18	43.58	27.24	100.00

**POWER AVAILABILITY-DEMAND POSITION AT THE TIME OF PEAK  
DEMAND MET DURING AUGUST 2009**

All figures in MW

Date	Time of peak demand	Generation within Delhi						Import from the Grid	Schedule from the Grid	OD(-)/UD(+)	Demand met	Shedding	Un-Restricted Demand
		IP	RPH	GT	PPCL	BTPS	Total						
(1)	(2)	(3)	(4)	(5)	(6)	(7)	(8)= (3) to (7)	(9)	(10)	(11)= (10)-(9)	(12)= (10)+ (11)	(13)	(14)= (12)+ (13)
1	23:00:00	88	36	200	143	527	994	2994	2662	-332	<b>3988</b>	69	4057
2	23:51:42	59	28	217	142	526	972	2915	2712	-203	<b>3887</b>	88	3975
3	14:19:10	45	70	209	137	464	925	3065	2848	-217	<b>3990</b>	212	4202
4	23:02:50	102	74	214	139	511	1040	3154	2861	-293	<b>4194</b>	22	4216
5	00:05:43	102	75	210	143	509	1039	3092	2764	-328	<b>4131</b>	3	4134
6	23:00:00	70	74	207	142	503	996	3037	2675	-362	<b>4033</b>	139	4172
7	16:37:54	65	83	207	139	510	1004	3157	2941	-216	<b>4161</b>	114	4275
8	22:08:28	102	73	211	138	505	1029	3057	2900	-157	<b>4086</b>	6	4092
9	22:59:35	95	77	215	136	516	1039	3123	2985	-138	<b>4162</b>	73	4235
10	16:11:46	36	80	213	135	520	984	3119	2638	-481	<b>4103</b>	292	4395
11	12:30:00	87	81	214	139	513	1034	3017	2842	-175	<b>4051</b>	33	4084
12	22:02:57	82	78	217	139	482	998	3192	2534	-658	<b>4190</b>	199	4389
13	15:36:02	104	81	217	140	482	1024	3328	2924	-404	<b>4352</b>	93	4445
14	00:00:07	116	82	209	141	492	1040	2888	2722	-166	<b>3928</b>	1	3929
15	00:51:10	115	81	215	146	490	1047	2229	2490	261	<b>3276</b>	0	3276
16	23:00:00	122	79	183	149	465	998	2078	2445	367	<b>3076</b>	0	3076
17	15:05:59	57	75	227	146	479	984	2567	2601	34	<b>3551</b>	56	3607
18	22:37:36	35	80	218	299	534	1166	2651	2500	-151	<b>3817</b>	0	3817
19	22:44:16	75	71	220	299	512	1177	2713	2574	-139	<b>3890</b>	0	3890
20	15:37:06	59	79	210	289	512	1149	2898	2771	-127	<b>4047</b>	56	4103
21	14:35:00	60	62	216	143	501	982	2989	2712	-277	<b>3971</b>	3	3974
22	15:02:31	63	75	167	293	508	1106	2591	2712	121	<b>3697</b>	62	3759
23	22:53:56	57	80	158	295	493	1083	2825	2720	-105	<b>3908</b>	3	3911
24	15:03:51	58	78	168	291	508	1103	2964	2682	-282	<b>4067</b>	151	4218
25	15:04:52	33	76	169	301	523	1102	2680	2616	-64	<b>3782</b>	49	3831
26	19:36:18	60	70	138	302	509	1079	2579	2602	23	<b>3658</b>	38	3696
27	12:30:13	64	75	175	295	524	1133	2423	2659	236	<b>3556</b>	23	3579
28	19:50:12	32	71	161	299	469	1032	2727	2803	76	<b>3759</b>	36	3795
29	22:57:14	38	42	163	243	492	978	2807	2737	-70	<b>3785</b>	3	3788
30	00:00:17	38	44	164	240	507	993	2628	2542	-86	<b>3621</b>	3	3624
31	15:06:03	35	65	153	296	492	1041	2753	2631	-122	<b>3794</b>	64	3858

## POWER AVAILABILITY- DEMAND POSITION AT THE TIME OF MAXIMUM UNRESTRICTED DEMAND DURING AUGUST 2009

All figures in MW

Date	Time of peak demand	Generation within Delhi						Import from the Grid	Schedule from the Grid	OD(-)/UD(+)	Demand met	Shedding	Un-Restricted Demand
		IP	RPH	GT	PPCL	BTP S	Total						
(1)	(2)	(3)	(4)	(5)	(6)	(7)	(8)=(3) to (7)	(9)	(10)	(11)=(10)-(9)	(12)=(10)+(11)	(13)	(14)=(12)+(13)
1	23:00:00	88	36	200	143	527	994	2994	2662	-332	<b>3988</b>	69	4057
2	23:51:42	59	28	217	142	526	972	2915	2712	-203	<b>3887</b>	88	3975
3	14:19:10	45	70	209	137	464	925	3065	2848	-217	<b>3990</b>	212	4202
4	23:02:50	102	74	214	139	511	1040	3154	2861	-293	<b>4194</b>	22	4216
5	00:05:43	102	75	210	143	509	1039	3092	2764	-328	<b>4131</b>	3	4134
6	23:00:00	70	74	207	142	503	996	3037	2675	-362	<b>4033</b>	139	4172
7	16:37:54	65	83	207	139	510	1004	3157	2941	-216	<b>4161</b>	114	4275
8	22:08:28	102	73	211	138	505	1029	3057	2900	-157	<b>4086</b>	6	4092
9	22:59:35	95	77	215	136	516	1039	3123	2985	-138	<b>4162</b>	73	4235
10	16:11:46	36	80	213	135	520	984	3119	2638	-481	<b>4103</b>	292	4395
11	12:30:00	87	81	214	139	513	1034	3017	2842	-175	<b>4051</b>	33	4084
12	22:02:57	82	78	217	139	482	998	3192	2534	-658	<b>4190</b>	199	4389
13	15:36:02	104	81	217	140	482	1024	3328	2924	-404	<b>4352</b>	93	4445
14	00:00:07	116	82	209	141	492	1040	2888	2722	-166	<b>3928</b>	1	3929
15	00:51:10	115	81	215	146	490	1047	2229	2490	261	<b>3276</b>	0	3276
16	23:00:00	122	79	183	149	465	998	2078	2445	367	<b>3076</b>	0	3076
17	15:05:59	57	75	227	146	479	984	2567	2601	34	<b>3551</b>	56	3607
18	22:37:36	35	80	218	299	534	1166	2651	2500	-151	<b>3817</b>	0	3817
19	22:44:16	75	71	220	299	512	1177	2713	2574	-139	<b>3890</b>	0	3890
20	15:37:06	59	79	210	289	512	1149	2898	2771	-127	<b>4047</b>	56	4103
21	14:35:00	60	62	216	143	501	982	2989	2712	-277	<b>3971</b>	3	3974
22	15:02:31	63	75	167	293	508	1106	2591	2712	121	<b>3697</b>	62	3759
23	22:53:56	57	80	158	295	493	1083	2825	2720	-105	<b>3908</b>	3	3911
24	15:03:51	58	78	168	291	508	1103	2964	2682	-282	<b>4067</b>	151	4218
25	15:04:52	33	76	169	301	523	1102	2680	2616	-64	<b>3782</b>	49	3831
26	19:36:18	60	70	138	302	509	1079	2579	2602	23	<b>3658</b>	38	3696
27	12:30:13	64	75	175	295	524	1133	2423	2659	236	<b>3556</b>	23	3579
28	19:50:12	32	71	161	299	469	1032	2727	2803	76	<b>3759</b>	36	3795
29	22:57:14	38	42	163	243	492	978	2807	2737	-70	<b>3785</b>	3	3788
30	00:00:17	38	44	164	240	507	993	2628	2542	-86	<b>3621</b>	3	3624
31	15:06:03	35	65	153	296	492	1041	2753	2631	-122	<b>3794</b>	64	3858

## SOURCEWISE SCHEDULED DRAWL FROM NORTHERN GRID AS WELL AS AVAILABILITY WITHIN DELHI FOR AUGUST 2009

### A) AVAILABILITY FROM GENCO AND PRAGATI STNs. (all fig in MUs)

(I) IP	54.077
(II) 1/3rd HARYANA SHARE	14.274
JHAJJAR SHARE	0.403
(III)NET IP GENERATION	<b>39.400</b>
(IV) RPH	59.722
(V) GT+WHRU	149.069
(VI) PRAGATI	152.866
TOTAL (iii+iv+v+vi)	<b>401.057</b>
B) AVAILABILITY FROM BTPS	388.885
C) AUXILIARY CONSUMPTION OF GENERATING STNs. EXCLUDING BTPS	27.783
D) NET GENERATION AVAILABLE WITHIN DELHI(A+B-C)	<b>762.159</b>

### B) SOURCE WISE SCHEDULED DRAWL FROM THE NORTHERN GRID

NAME OF THE STATION	AVAILABILITY AT POWER PLANT	AVAILABILITY AT DELHI PERIPHERY	ALLOCATION MADE BY NRLDC AT POWER PLANT	ALLOCATION MADE BY NRLDC AT DELHI PERIPHERY
BAIRA-SUIL	7.186	6.931	7.186	6.931
SALAL	55.462	53.485	55.462	53.485
TANAKPUR	6.329	6.103	6.329	6.103
CHAMERA	22.343	21.550	22.343	21.550
CHAMERA-II	30.013	28.947	30.013	28.947
DHAULI GANGA	27.712	26.723	27.712	26.723
SINGRAULI	105.387	101.629	105.387	101.629
URI	29.594	28.544	29.594	28.544
ANTA (GAS)	5.118	4.934	5.118	4.934
ANTA (LIQUID)	2.365	2.281	1.488	1.436
ANTA (RLNG)	24.972	24.082	16.491	15.908
RIHAND-I	67.281	64.881	67.281	64.881
RIHAND-II	69.086	66.636	69.086	66.636
AURAIYA (GAS)	38.058	36.701	38.058	36.701
AURAIYA (LIQUID)	13.494	13.013	8.547	8.244
AURAIYA (RLNG)	0.553	0.534	0.553	0.534
DADRI(GT) (GAS)	40.737	39.285	40.737	39.285
DADRI(GT) (LIQUID)	19.551	18.852	12.557	12.112
DADRI(GT) (RLNG)	1.100	1.061	1.100	1.061
UNCHAHAAR-I	17.210	16.596	17.081	16.472
UNCHAHAAR-III	22.445	21.645	22.290	21.496
DADRI(TH)	537.185	518.036	532.357	513.382
UNCHAHAAR-II	35.795	34.519	35.540	34.273
NAPP	8.888	8.571	8.888	8.571
RAPP-B#4	0.479	0.462	0.477	0.460
RAPP-B#3	0.805	0.776	0.805	0.776
RAJASHTAN	74.400	71.748	74.400	71.748
MPTCL	29.173	27.524	27.523	26.543
RAJASTHAN	5.230	4.819	4.819	4.646
TO ORISSA	-0.137	-0.142	-0.142	-0.148
HIMACHAL PRADESH	71.583	69.034	71.583	69.034
DVC (ER)	28.427	27.390	27.390	26.408
ANDHRA PRADESH	51.183	49.417	45.634	44.013
CHATTISHGARH	2.319	2.184	2.108	2.035
CHATTISHGARH	58.301	55.052	55.052	53.062
CHATTISHGARH	50.394	47.634	45.252	43.626

NAME OF THE STATION	AVAILABILITY AT POWER PLANT	AVAILABILITY AT DELHI PERIPHERY	ALLOCATION MADE BY NRLDC AT POWER PLANT	ALLOCATION MADE BY NRLDC AT DELHI PERIPHERY
UTTRANCHAL	12.945	12.487	12.945	12.487
KARNATAKA	24.724	23.723	21.514	20.736
PUNJAB	0.000	0.000	0.000	0.000
MAHARASHTA	37.136	35.046	33.346	32.157
TO RAJASHTAN	-3.891	-4.039	-3.891	-4.039
NRURS	2.290	2.209	2.290	2.209
TRIPURA	16.851	16.238	15.652	15.096
J&K	6.721	6.481	6.721	6.481
TO ANDHRA PRADESH	-0.800	-0.832	-0.832	-0.862
TO HARYANA	-1.207	-1.199	-1.207	-1.199
TO POWER EXCHANGE (IEX)	-11.633	-12.070	-11.633	-12.070
POWER EXCHANGE (IEX)	72.879	70.298	73.190	70.598
TO POWER EXCHANGE - PX	-0.880	-0.914	-0.880	-0.914
POWER EXCHANGE - PX	7.216	6.963	7.216	6.963
NATHPA JHAKHRI	110.529	106.591	110.529	106.591
DULASTI	40.153	38.722	40.153	38.722
TEHRI	13.690	13.203	13.690	13.203
KHELGAON -II	29.053	28.005	28.005	27.008
TALA	22.927	22.093	22.093	21.305
FRAKKA	11.861	11.430	11.430	11.021
KHELGAON	30.170	29.074	29.074	28.037
TALCHER	0.405	0.391	0.391	0.378
TOTAL SCHEDULE FROM THE GRID	1981.157	1905.337	1925.895	1855.947

**C) AGENCY WISE BREAKUP OF ENERGY SCHEDULED DRAWL FROM THE GRID**

NAME OF THE STATION	AVAILABILITY AT POWER PLANT	AVAILABILITY AT PERIPHERY	ALLOCATION MADE BY NRLDC AT POWER PLANT	ALLOCATION MADE BY NRLDC AT POWER PERIPHERY
NTPC - NR	1000.335	964.684	973.670	938.982
NTPC -ER	71.084	68.509	68.509	66.067
NHPC	218.792	211.004	218.792	211.004
NPC	10.172	9.810	10.169	9.808
MPTCL	29.173	27.524	27.523	26.543
RAJASHTAN	74.400	71.748	74.400	71.748
RAJASTHAN	5.230	4.819	4.819	4.646
HIMACHAL PRADESH	71.583	69.034	71.583	69.034
CHHATISHGARH	2.319	2.184	2.108	2.035
CHHATISHGARH	58.301	55.052	55.052	53.062
CHHATISHGARH	50.394	47.634	45.252	43.626
UTTRANCHAL	12.945	12.487	12.945	12.487
MAHARASHTRA	37.136	35.046	33.346	32.157
KARNATAKA	24.724	23.723	21.514	20.736
DVC (ER)	28.427	27.390	27.390	26.408
NRURS	2.290	2.209	2.290	2.209
TRIPURA	16.851	16.238	15.652	15.096
J&K	6.721	6.481	6.721	6.481
ANDHRA PRADESH	51.183	49.417	45.634	44.013
POWER EXCHANGE (IEX)	72.879	70.298	73.190	70.598
NATHPA JHAKHRI	110.529	106.591	110.529	106.591
TEHRI	13.690	13.203	13.690	13.203
TALA	22.927	22.093	22.093	21.305
TALCHER	0.405	0.391	0.391	0.378
POWER EXCHANGE - PX	7.216	6.963	7.216	6.963
TOTAL SCHEDULE FROM THE GRID	1999.705	1924.533	1944.480	1875.179



**D) AGENCY WISE BREAKUP OF ENERGY SCHEDULED BY NRLDC FOR EXPORT TO OTHER UTILITIES FROM DTL**

NAME OF THE STATION	AVAILABILITY AT POWER PLANT	AVAILABILITY AT PERIPHERY	ALLOCATION MADE BY NRLDC AT POWER PLANT	ALLOCATION MADE BY NRLDC AT PERIPHERY
TO ORISSA	-0.137	-0.142	-0.142	-0.148
TO HARYANA	-1.207	-1.199	-1.207	-1.199
TO ANDHRA PRADESH	-0.800	-0.832	-0.832	-0.862
TO POWER EXCHANGE - PX	-0.880	-0.914	-0.880	-0.914
TO HIMACHAL PRADESH	0.000	0.000	0.000	0.000
TO RAJASHTAN	-3.891	-4.039	-3.891	-4.039
TO POWER EXCHANGE (IEX)	-11.633	-12.070	-11.633	-12.070
<b>TOTAL</b>	<b>-18.548</b>	<b>-19.196</b>	<b>-18.585</b>	<b>-19.232</b>
<b>(G) TOTAL SCHEDULED DRAWL FROM THE GRID (G=Fa+Fb+Fc)</b>	<b>1981.157</b>	<b>1905.337</b>	<b>1925.895</b>	<b>1855.947</b>
TOTAL CONSUMPTION INCLUDING AUX. OF GENERATING STNS. EXCLUDING BTPS				<b>2430.336</b>
NET CONSUMPTION				<b>2402.553</b>
AVAILABILITY WITHIN DELHI				<b>762.159</b>
ACTUAL DRAWAL FROM THE GRID				<b>1640.394</b>
OVER DRAWAL(+)/UNDER DRAWAL(-) FROM THE GRID ON THE BASIS OF SCHEDULED ALLOCATION MADE BY NRLDC TO DELHI AT PERIPHERY				<b>-215.553</b>
LOAD SHEDDING				<b>35.597</b>
UNRESTRICTED DEMAND (GROSS)				<b>2465.933</b>
UNRESTRICTED DEMAND (NET)				<b>2438.150</b>
MAX. NET CONSUMPTION				84.762 Mus. ON 07.08.2009
MAX. LOAD SHEDDING				733 MW ON 12.08.2009 AT 16.30.00HRS.
<b>PEAK LOAD</b>	Peak Demand during the month			SHEDDING AT PEAK TIME
DAY PEAK	4352MW AT 15.36.02HRS ON 13.08.2009			56
EVENING PEAK	4194MW AT 23.02.50HRS ON 04.08.2009			68
P.L.F. OF GENCO AND PRAGATI STNs.	IP RPH GT PRAGATI			29.37% 59.46% 74.21% 62.26%

## SHEDDING DETAILS DURING THE MONTH OF AUGUST 2009.

ALL FIGURES IN MUS

DATE	No. of Under Freq. Relay Operated	Shedding due to under frequency relay operation in MUs					Shedding due to Grid Restrictions (Over drawl / low freq.)			
		BSES		NDPL	NDMC	TOTAL	BSES		NDPL	NDMC
		BYPL	BRPL				BYPL	BRPL		
1	2	3	4	5	6	7=3 to 6	8	9	10	11
01-Aug-09	1	0.000	0.001	0.000	0.000	<b>0.001</b>	0.000	0.000	0.000	0.000
02-Aug-09	0	0.000	0.000	0.000	0.000	<b>0.000</b>	0.000	0.000	0.000	0.000
03-Aug-09	3	0.000	0.052	0.000	0.000	<b>0.052</b>	0.000	0.000	0.270	0.000
04-Aug-09	9	0.008	0.105	0.003	0.000	<b>0.116</b>	0.172	0.212	0.362	0.000
05-Aug-09	0	0.000	0.000	0.000	0.000	<b>0.000</b>	0.000	0.000	0.000	0.000
06-Aug-09	1	0.019	0.000	0.000	0.000	<b>0.019</b>	0.019	0.412	0.698	0.000
07-Aug-09	10	0.094	0.249	0.000	0.000	<b>0.343</b>	0.199	0.808	0.711	0.000
08-Aug-09	21	0.045	0.384	0.019	0.000	<b>0.448</b>	0.335	1.111	1.117	0.000
09-Aug-09	8	0.007	0.044	0.023	0.000	<b>0.074</b>	0.223	0.968	0.118	0.000
10-Aug-09	13	0.056	0.275	0.025	0.000	<b>0.356</b>	0.902	2.468	1.221	0.000
11-Aug-09	13	0.045	0.160	0.046	0.000	<b>0.251</b>	0.484	1.204	0.625	0.000
12-Aug-09	20	0.068	0.391	0.042	0.000	<b>0.501</b>	1.052	1.886	0.615	0.000
13-Aug-09	8	0.032	0.082	0.035	0.000	<b>0.149</b>	0.180	0.366	0.319	0.000
14-Aug-09	2	0.000	0.011	0.000	0.000	<b>0.011</b>	0.008	0.028	0.014	0.000
15-Aug-09	0	0.000	0.000	0.000	0.000	<b>0.000</b>	0.000	0.000	0.000	0.000
16-Aug-09	0	0.000	0.000	0.000	0.000	<b>0.000</b>	0.000	0.000	0.000	0.000
17-Aug-09	0	0.000	0.000	0.000	0.000	<b>0.000</b>	0.000	0.000	0.000	0.000
18-Aug-09	3	0.000	0.049	0.000	0.000	<b>0.049</b>	0.033	0.237	0.000	0.000
19-Aug-09	5	0.000	0.050	0.005	0.000	<b>0.055</b>	0.031	0.186	0.000	0.000
20-Aug-09	2	0.000	0.037	0.000	0.000	<b>0.037</b>	0.020	0.278	0.000	0.000
21-Aug-09	1	0.007	0.000	0.000	0.000	<b>0.007</b>	0.000	0.026	0.000	0.000
22-Aug-09	6	0.000	0.060	0.002	0.000	<b>0.062</b>	0.000	0.000	0.000	0.000
23-Aug-09	0	0.000	0.000	0.000	0.000	<b>0.000</b>	0.000	0.000	0.000	0.000
24-Aug-09	12	0.046	0.148	0.000	0.000	<b>0.194</b>	0.203	0.859	0.000	0.000
25-Aug-09	1	0.000	0.003	0.000	0.000	<b>0.003</b>	0.017	0.018	0.000	0.000
26-Aug-09	2	0.011	0.000	0.000	0.000	<b>0.011</b>	0.000	0.000	0.000	0.000
27-Aug-09	0	0.000	0.000	0.000	0.000	<b>0.000</b>	0.000	0.000	0.000	0.000
28-Aug-09	0	0.000	0.000	0.000	0.000	<b>0.000</b>	0.000	0.000	0.000	0.000
29-Aug-09	0	0.000	0.000	0.000	0.000	<b>0.000</b>	0.000	0.000	0.000	0.000
30-Aug-09	0	0.000	0.000	0.000	0.000	<b>0.000</b>	0.000	0.000	0.000	0.000
31-Aug-09	0	0.000	0.000	0.000	0.000	<b>0.000</b>	0.000	0.000	0.000	0.000
<b>Total</b>	<b>141</b>	<b>0.438</b>	<b>2.101</b>	<b>0.200</b>	<b>0.000</b>	<b>2.739</b>	<b>3.878</b>	<b>11.067</b>	<b>6.070</b>	<b>0.000</b>

**ALL FIGURES IN MUS**

Date	Shedding due to Transmission/Grid Constraints in Central Sector Stations / TTC / ATC VIOLATION				TOTAL 16=8to15	TOTAL SHEDDING DUE TO GRID RESTRICTIONS 17=16+7	Due to T&D Constraints				
	BSES		NDPL	NDMC			DTL				
	BYPL	BRPL					BSES		NDPL	NDMC	MES
			BYPL	BRPL							
<b>1</b>	12	13	14	15	16=8to15	17=16+7	18	19	20	21	22
01-Aug-09	0.000	0.000	0.000	0.000	<b>0.000</b>	<b>0.001</b>	0.000	0.153	0.000	0.000	0.000
02-Aug-09	0.000	0.000	0.000	0.000	<b>0.000</b>	<b>0.000</b>	0.000	0.215	0.025	0.000	0.000
03-Aug-09	0.000	0.000	0.270	0.000	<b>0.270</b>	<b>0.322</b>	0.011	1.271	0.045	0.000	0.000
04-Aug-09	0.172	0.212	0.362	0.000	<b>0.746</b>	<b>0.862</b>	0.000	0.183	0.000	0.000	0.000
05-Aug-09	0.000	0.000	0.000	0.000	<b>0.000</b>	<b>0.000</b>	0.000	0.000	0.006	0.000	0.000
06-Aug-09	0.019	0.412	0.698	0.000	<b>1.129</b>	<b>1.148</b>	0.000	0.000	0.000	0.000	0.000
07-Aug-09	0.199	0.808	0.711	0.000	<b>1.718</b>	<b>2.061</b>	0.037	0.000	0.000	0.000	0.000
08-Aug-09	0.335	1.111	1.191	0.000	<b>2.637</b>	<b>3.085</b>	0.000	0.000	0.021	0.000	0.000
09-Aug-09	0.223	0.968	0.118	0.000	<b>1.309</b>	<b>1.383</b>	0.000	0.000	0.000	0.000	0.000
10-Aug-09	0.902	2.468	1.221	0.000	<b>4.591</b>	<b>4.947</b>	0.000	0.000	0.025	0.000	0.000
11-Aug-09	0.484	1.204	0.625	0.000	<b>2.313</b>	<b>2.564</b>	0.000	0.000	0.000	0.000	0.000
12-Aug-09	1.052	1.886	0.615	0.000	<b>3.553</b>	<b>4.054</b>	0.094	0.003	0.015	0.000	0.000
13-Aug-09	0.180	0.366	0.319	0.000	<b>0.865</b>	<b>1.014</b>	0.000	0.024	0.000	0.000	0.000
14-Aug-09	0.008	0.028	0.014	0.000	<b>0.050</b>	<b>0.061</b>	0.000	0.017	0.006	0.000	0.000
15-Aug-09	0.000	0.000	0.000	0.000	<b>0.000</b>	<b>0.000</b>	0.000	0.010	0.000	0.000	0.000
16-Aug-09	0.000	0.000	0.000	0.000	<b>0.000</b>	<b>0.000</b>	0.151	0.000	0.007	0.000	0.000
17-Aug-09	0.000	0.000	0.000	0.000	<b>0.000</b>	<b>0.000</b>	0.050	0.000	0.000	0.000	0.000
18-Aug-09	0.033	0.237	0.000	0.000	<b>0.270</b>	<b>0.319</b>	0.000	0.000	0.008	0.000	0.000
19-Aug-09	0.031	0.186	0.000	0.000	<b>0.217</b>	<b>0.272</b>	0.003	0.000	0.000	0.000	0.000
20-Aug-09	0.020	0.278	0.000	0.000	<b>0.298</b>	<b>0.335</b>	0.000	0.000	0.000	0.000	0.000
21-Aug-09	0.000	0.026	0.000	0.000	<b>0.026</b>	<b>0.033</b>	0.210	0.000	0.003	0.000	0.000
22-Aug-09	0.000	0.000	0.000	0.000	<b>0.000</b>	<b>0.062</b>	0.000	0.004	0.000	0.000	0.000
23-Aug-09	0.000	0.000	0.000	0.000	<b>0.000</b>	<b>0.000</b>	0.000	0.000	0.000	0.000	0.000
24-Aug-09	0.203	0.878	0.000	0.000	<b>1.081</b>	<b>1.275</b>	0.000	0.000	0.001	0.000	0.000
25-Aug-09	0.017	0.018	0.000	0.000	<b>0.035</b>	<b>0.038</b>	0.076	0.000	0.054	0.000	0.000
26-Aug-09	0.000	0.000	0.000	0.000	<b>0.000</b>	<b>0.011</b>	0.000	0.000	0.011	0.000	0.000
27-Aug-09	0.000	0.000	0.000	0.000	<b>0.000</b>	<b>0.000</b>	0.534	0.043	0.000	0.026	0.000
28-Aug-09	0.000	0.000	0.000	0.000	<b>0.000</b>	<b>0.000</b>	0.040	0.000	0.000	0.000	0.000
29-Aug-09	0.000	0.000	0.000	0.000	<b>0.000</b>	<b>0.000</b>	0.000	0.037	0.000	0.000	0.000
30-Aug-09	0.000	0.000	0.000	0.000	<b>0.000</b>	<b>0.000</b>	0.002	0.029	0.003	0.000	0.000
31-Aug-09	0.000	0.000	0.000	0.000	<b>0.000</b>	<b>0.000</b>	0.000	0.000	0.000	0.000	0.000
<b>Total</b>	<b>3.878</b>	<b>11.086</b>	<b>6.144</b>	<b>0.000</b>	<b>21.108</b>	<b>23.847</b>	<b>1.208</b>	<b>1.989</b>	<b>0.230</b>	<b>0.026</b>	<b>0.000</b>

**ALL FIGURES IN MUs**

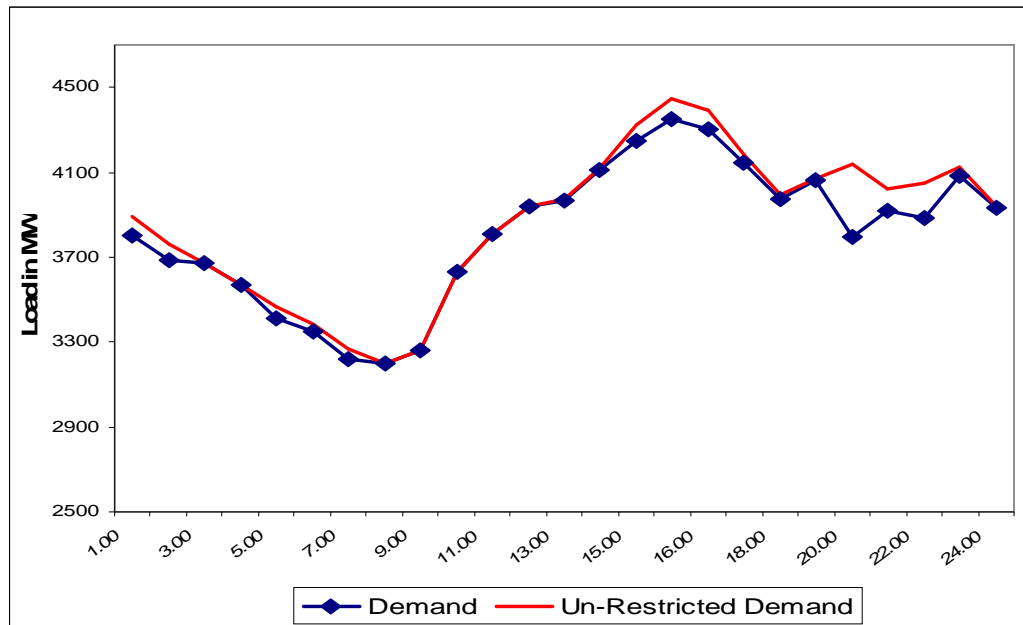
DATE	DUE TO T&D CONSTRAINTS			OTHER AGENCIES LIKE GENCO, BBMB, BTPS ETC.	THEFT PRONE SHEDDING			TOTAL SHEDDING DUE TO T&D CONSTS. & THEFT PRONE	GRAND TOTAL
	DISCOMS				NDPL	BSES			
	BSES		NDPL			BYPL	BRPL		
	BYPL	BRPL							
I	23	24	25	2+	27	28	29	30=18 to29	31=30+17
01-Aug-09	0.033	0.044	0.015	0.000	0.000	0.000	0.212	0.457	0.458
02-Aug-09	0.011	0.088	0.031	0.185	0.000	0.000	0.179	0.734	0.734
03-Aug-09	0.014	0.449	0.000	0.000	0.000	0.000	0.104	1.894	2.216
04-Aug-09	0.023	0.296	0.027	0.000	0.000	0.000	0.096	0.625	1.487
05-Aug-09	0.000	0.010	0.000	0.000	0.000	0.000	0.198	0.214	0.214
06-Aug-09	0.015	0.021	0.015	0.000	0.000	0.000	0.000	0.051	1.199
07-Aug-09	0.007	0.026	0.054	0.000	0.000	0.000	0.211	0.335	2.396
08-Aug-09	0.003	0.006	0.057	0.000	0.000	0.000	0.180	0.267	3.352
09-Aug-09	0.005	0.024	0.049	0.000	0.000	0.000	0.219	0.297	1.680
10-Aug-09	0.065	0.074	0.095	0.000	0.000	0.000	0.076	0.335	5.282
11-Aug-09	0.085	0.148	0.045	0.000	0.000	0.000	0.141	0.419	2.983
12-Aug-09	0.077	0.186	0.061	0.000	0.000	0.000	0.141	0.577	4.631
13-Aug-09	0.000	0.093	0.091	0.004	0.000	0.000	0.122	0.334	1.348
14-Aug-09	0.000	0.022	0.031	0.000	0.000	0.000	0.000	0.076	0.137
15-Aug-09	0.035	0.000	0.008	0.000	0.000	0.000	0.000	0.053	0.053
16-Aug-09	0.000	0.005	0.026	0.015	0.000	0.000	0.182	0.386	0.386
17-Aug-09	0.044	0.010	0.043	0.000	0.000	0.000	0.203	0.350	0.350
18-Aug-09	0.183	0.000	0.010	0.000	0.000	0.000	0.229	0.430	0.749
19-Aug-09	0.000	0.000	0.010	0.000	0.000	0.000	0.219	0.232	0.504
20-Aug-09	0.006	0.010	0.001	0.000	0.000	0.000	0.201	0.218	0.553
21-Aug-09	0.000	0.041	0.011	0.009	0.000	0.000	0.104	0.378	0.411
22-Aug-09	0.033	0.003	0.027	0.000	0.000	0.000	0.204	0.271	0.333
23-Aug-09	0.000	0.005	0.001	0.000	0.000	0.000	0.219	0.225	0.225
24-Aug-09	0.000	0.026	0.043	0.000	0.000	0.000	0.204	0.274	1.549
25-Aug-09	0.000	0.070	0.048	0.000	0.000	0.000	0.167	0.415	0.453
26-Aug-09	0.000	0.040	0.010	0.000	0.000	0.000	0.161	0.222	0.233
27-Aug-09	0.012	0.015	0.049	0.000	0.000	0.000	0.138	0.817	0.817
28-Aug-09	0.000	0.000	0.000	0.000	0.000	0.000	0.171	0.211	0.211
29-Aug-09	0.004	0.045	0.005	0.000	0.000	0.000	0.159	0.250	0.250
30-Aug-09	0.018	0.000	0.003	0.000	0.000	0.000	0.133	0.188	0.188
31-Aug-09	0.001	0.001	0.072	0.000	0.000	0.000	0.141	0.215	0.215
<b>Total</b>	<b>0.674</b>	<b>1.758</b>	<b>0.938</b>	<b>0.213</b>	<b>0.000</b>	<b>0.000</b>	<b>4.714</b>	<b>11.750</b>	<b>35.597</b>

DATE	(NET CONS.)	MAXL DEMAND MET DURING THE DAY	TIME OF OCCURRENCE OF MAX DEMAND	SHEDDING AT THIS TIME	UN-RESTRICTED DEMAND	MAXIMUM UN-RESTRICTED DEMAND DURING THE DAY	TIME OF MAX. UN-REST. DEMAND	DEMAND AT THAT TIME	SHEDDING AT THAT TIME
	In Mus.	IN MW	IN HRS.	IN MW	IN MW	IN MW	HRS.	IN MW	IN MW
1	32	33	34	35	36=33+35	37=39+40	38	39	40
01-Aug-09	79.812	3988	23:00:00	69	4057	4057	23:00:00	3988	69
02-Aug-09	78.215	3887	23:51:42	88	3975	3975	23:51:42	3887	88
03-Aug-09	81.608	3990	14:19:10	212	4202	4202	14:19:10	3990	212
04-Aug-09	83.380	4194	23:02:50	22	4216	4220	16:00:00	4045	175
05-Aug-09	77.878	4131	00:05:43	3	4134	4134	00:05:43	4131	3
06-Aug-09	79.482	4033	23:00	139	4172	4182	22:30	3944	238
07-Aug-09	84.762	4161	16:37:54	114	4275	4360	16:00	4117	243
08-Aug-09	81.048	4086	22:08:28	6	4092	4221	23:00	3990	231
09-Aug-09	82.451	4162	22:59:35	73	4235	4235	22:59:35	4162	73
10-Aug-09	82.696	4103	16:11:46	292	4395	4395	16:11:46	4103	292
11-Aug-09	83.974	4051	12:30	33	4084	4214	22:30	3837	377
12-Aug-09	81.481	4190	22:02:57	199	4389	4470	16:00	3737	733
13-Aug-09	84.252	4352	15:36:02	93	4445	4445	15:36:02	4352	93
14-Aug-09	75.639	3928	00:00:07	1	3929	3929	00:00:07	3928	1
15-Aug-09	61.957	3276	00:51:10	0	3276	3276	00:51:10	3276	0
16-Aug-09	64.535	3076	23:00	0	3076	3082	20:30	3043	39
17-Aug-09	69.636	3551	15:05:59	56	3607	3607	15:05:59	3551	56
18-Aug-09	75.588	3817	22:37:36	0	3817	3857	20:00	3687	170
19-Aug-09	79.755	3890	22:44:16	0	3890	3890	22:44:16	3890	0
20-Aug-09	81.457	4047	15:37:06	56	4103	4103	15:37:06	4047	56
21-Aug-09	76.198	3971	14:35	3	3974	4042	15:00	3779	263
22-Aug-09	74.707	3697	15:02:31	62	3759	3759	15:02:31	3697	62
23-Aug-09	74.895	3908	22:53:56	3	3911	3911	22:53:56	3908	3
24-Aug-09	80.876	4067	15:03:51	151	4218	4218	15:03:51	4067	151
25-Aug-09	79.929	3782	15:04:52	49	3831	3831	15:04:52	3782	49
26-Aug-09	76.984	3658	19:36:18	38	3696	3696	19:36:18	3658	38
27-Aug-09	73.237	3556	12:30:13	23	3579	3579	12:30:13	3556	23
28-Aug-09	74.969	3759	19:50:12	36	3795	3795	19:50:12	3759	36
29-Aug-09	76.075	3785	22:57:14	3	3788	3788	22:57:14	3785	3
30-Aug-09	68.808	3621	00:00:17	3	3624	3624	00:00:17	3621	3
31-Aug-09	76.269	3794	15:06:03	64	3858	3858	15:06:03	3794	64
<b>Total</b>	<b>2402.553</b>	<b>4352</b>			<b>4445</b>	<b>4470</b>			

10 **LOAD PATTERN OF DELHI ON THE DAY OF PEAK DEMAND MET DURING AUGUST 2009 ON 13.08.2009 – 4352 MW at 15:36:02HRS.**

All figures in MW

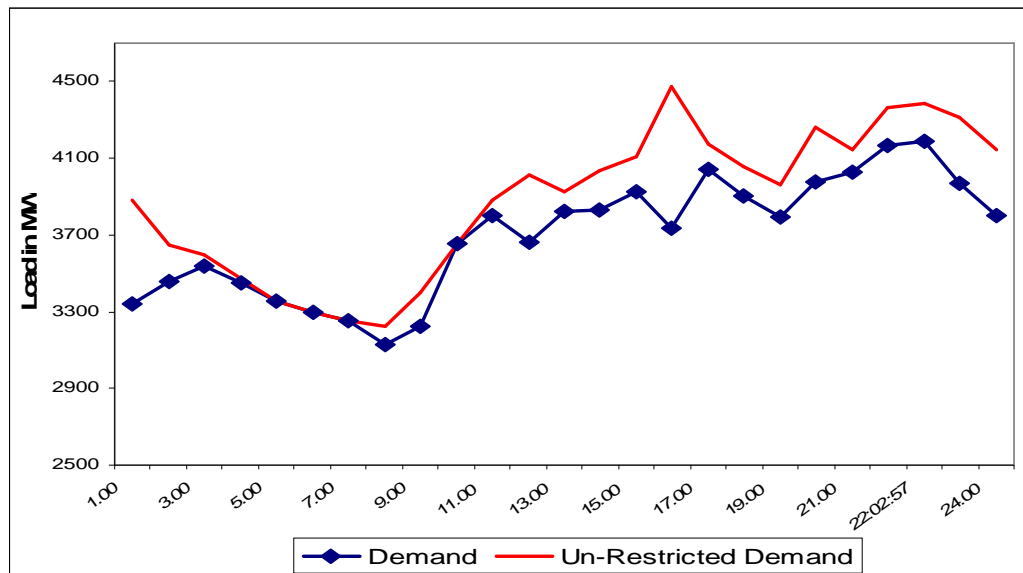
Hrs.	Demand	Load Shedding	Un-Restricted Demand
1.00	3803	87	3890
2.00	3684	76	3760
3.00	3674	0	3674
4.00	3567	0	3567
5.00	3409	57	3466
6.00	3350	35	3385
7.00	3217	54	3271
8.00	3197	0	3197
9.00	3261	0	3261
10.00	3632	0	3632
11.00	3812	0	3812
12.00	3936	5	3941
13.00	3970	6	3976
14.00	4112	3	4115
15.00	4247	78	4325
<b>15.36.02</b>	<b>4352</b>	<b>93</b>	<b>4445</b>
16.00	4300	91	4391
17.00	4142	47	4189
18.00	3972	22	3994
19.00	4064	3	4067
20.00	3798	338	4136
21.00	3916	107	4023
22.00	3883	166	4049
23.00	4080	46	4126
24.00	3935	3	3938
ENERGY IN Mus	84.252	1.348	85.600



11 **LOAD PATTERN OF DELHI ON THE DAY OF MAXIMUM UN-RESTRICTED DEMAND DURING AUGUST 2009 – 12.08.2009 – 4470MW at 16:00:00hrs.**

All figures in MW

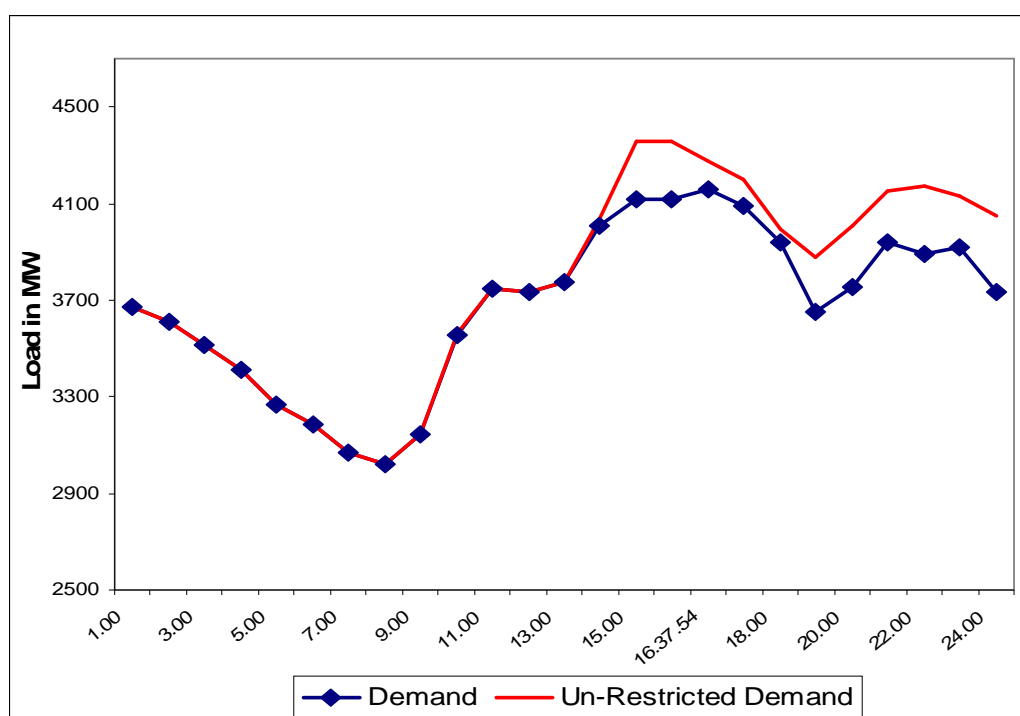
Hrs.	Demand	Load Shedding	Un-Restricted Demand
1.00	3343	536	3879
2.00	3461	185	3646
3.00	3539	57	3596
4.00	3452	22	3474
5.00	3352	0	3352
6.00	3298	0	3298
7.00	3254	0	3254
8.00	3127	100	3227
9.00	3223	173	3396
10.00	3652	0	3652
11.00	3799	80	3879
12.00	3659	356	4015
13.00	3823	102	3925
14.00	3830	202	4032
15.00	3927	180	4107
<b>16.00</b>	<b>3737</b>	<b>733</b>	<b>4470</b>
17.00	4041	136	4177
18.00	3904	152	4056
19.00	3793	167	3960
20.00	3975	289	4264
21.00	4025	119	4144
22.00	4164	203	4367
23.00	3966	347	4313
24.00	3801	341	4142
<b>ENERGY IN Mus</b>	<b>81.481</b>	<b>4.631</b>	<b>86.112</b>



**12 LOAD PATTERN OF DELHI ON THE DAY OF MAXIMUM ENERGY CONSUMED DURING AUGUST 2009 – 07.08.2009 – 84.762Mus**

All figures in MW

Hrs.	Demand	Load Shedding	Un-Restricted Demand
1.00	3675	0	3675
2.00	3608	0	3608
3.00	3511	0	3511
4.00	3409	0	3409
5.00	3270	0	3270
6.00	3182	0	3182
7.00	3071	0	3071
8.00	3020	0	3020
9.00	3144	0	3144
10.00	3556	7	3563
11.00	3746	2	3748
12.00	3733	0	3733
13.00	3776	0	3776
14.00	4011	26	4037
15.00	4120	234	4354
16.00	4117	243	4360
17.00	4087	112	4199
18.00	3941	52	3993
19.00	3653	226	3879
20.00	3756	249	4005
21.00	3936	213	4149
22.00	3892	279	4171
23.00	3922	212	4134
24.00	3731	317	4048
ENERGY IN Mus	<b>84.762</b>	2.396	87.158

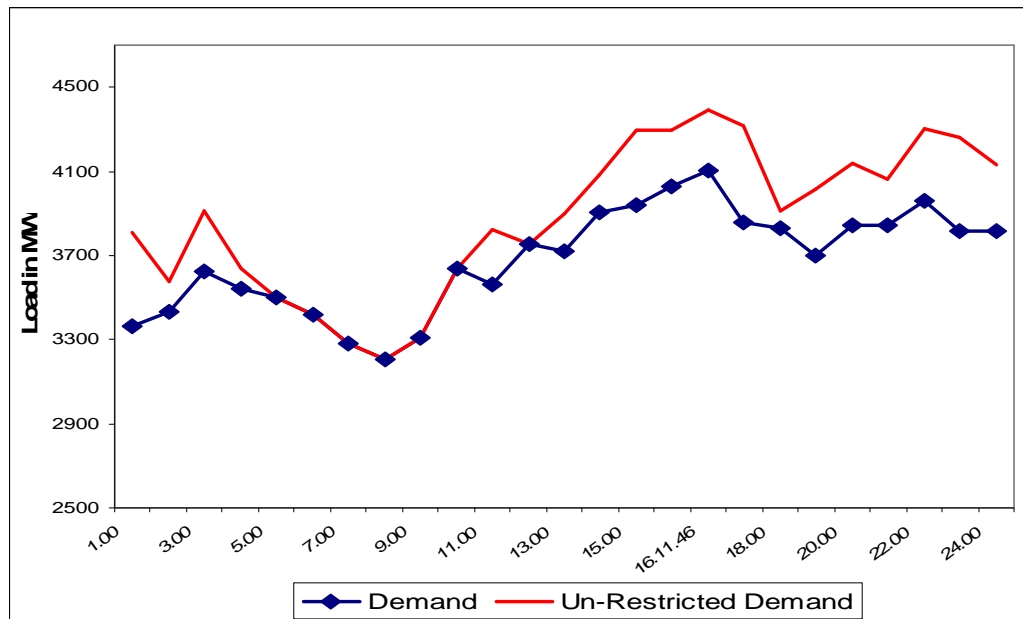




**13 LOAD PATTERN OF DELHI ON THE DAY OF MAXIMUM UNRESTRICTED ENERGY DEMAND DURING AUGUST 2009 – 10.08.2009 – 87.978Mus**

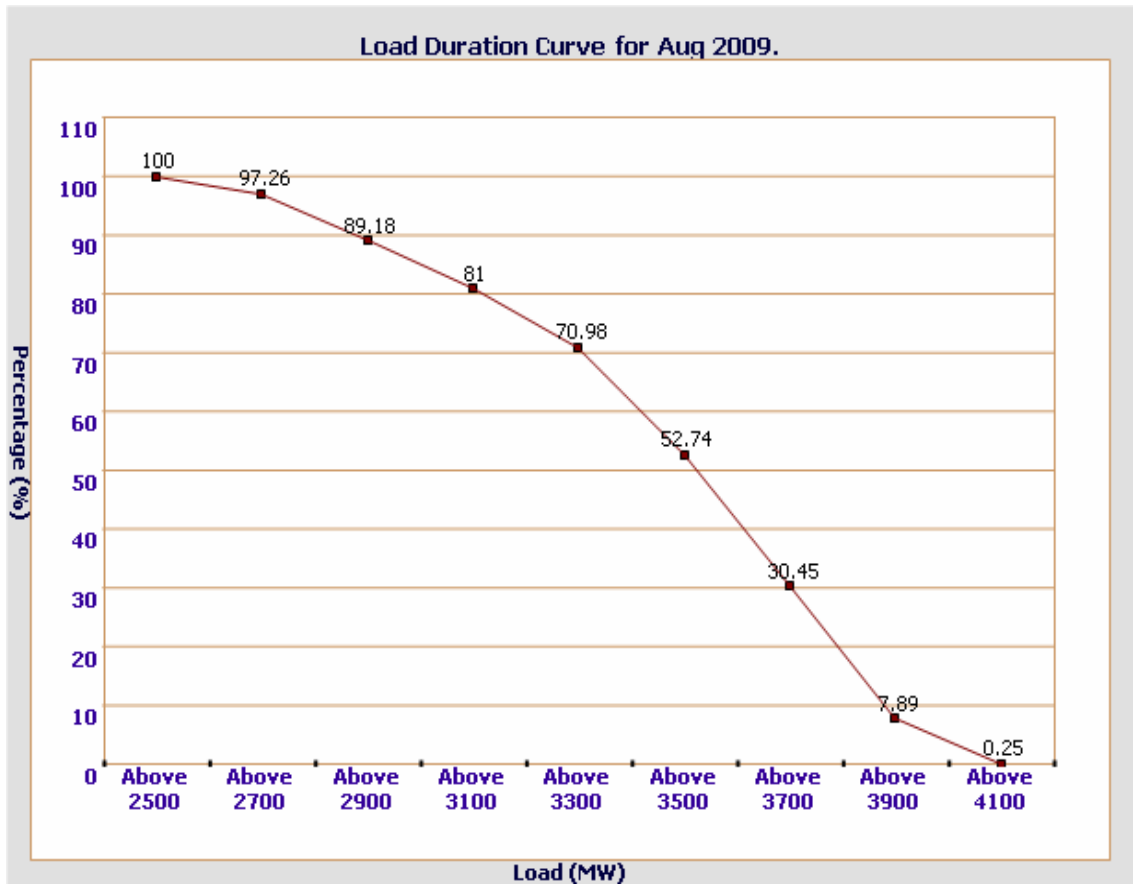
**All figures in MW**

Hrs.	Demand	Load Shedding	Un-Restricted Demand
1.00	3365	446	3811
2.00	3429	150	3579
3.00	3625	286	3911
4.00	3542	94	3636
5.00	3500	0	3500
6.00	3416	0	3416
7.00	3280	0	3280
8.00	3209	0	3209
9.00	3310	0	3310
10.00	3635	0	3635
11.00	3562	259	3821
12.00	3752	0	3752
13.00	3718	181	3899
14.00	3908	172	4080
15.00	3939	360	4299
16.00	4025	273	4298
17.00	3856	463	4319
18.00	3832	83	3915
19.00	3699	315	4014
20.00	3846	290	4136
21.00	3844	219	4063
22.00	3963	339	4302
23.00	3819	444	4263
24.00	3816	316	4132
<b>ENERGY IN Mus</b>	<b>82.696</b>	<b>5.282</b>	<b>87.978</b>



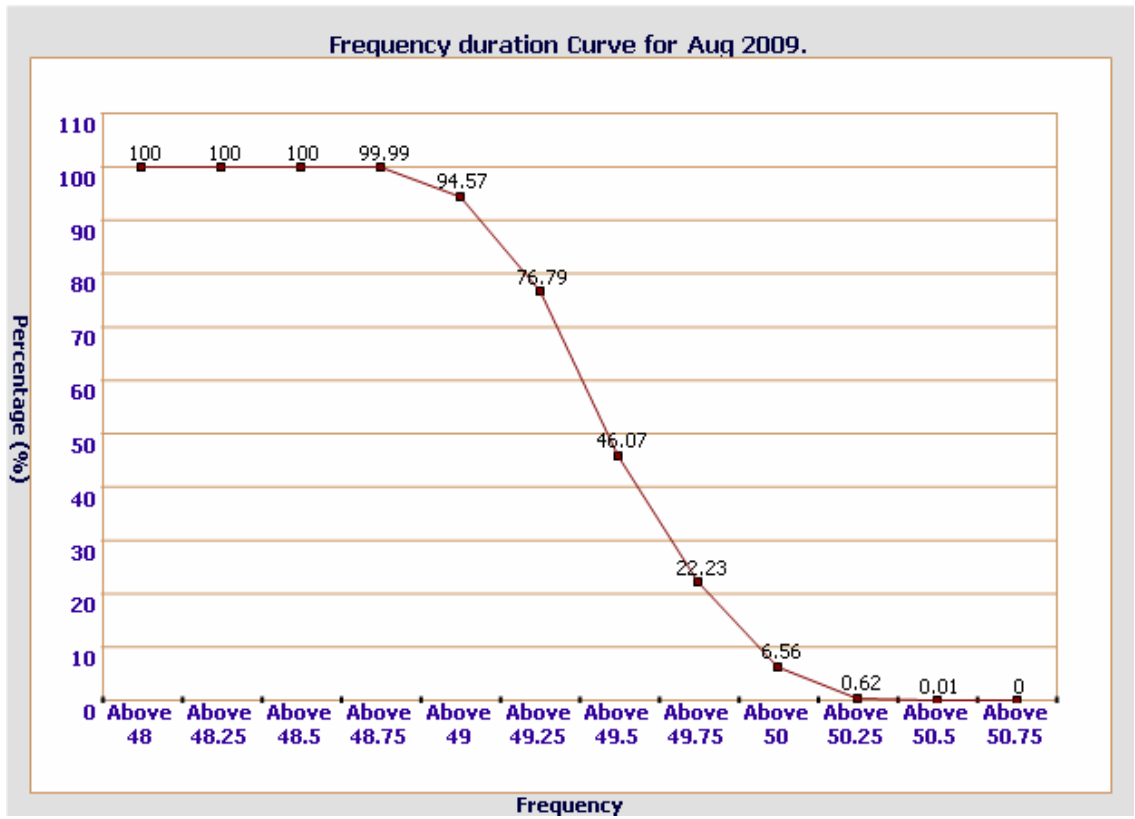
14 **LOAD DURATION CURVE FOR AUGUST 2009**

Load in MW	Percentage of Time
Above 2500	100 %
Above 2700	97.26 %
Above 2900	89.18 %
Above 3100	81.00 %
Above 3300	70.98 %
Above 3500	52.74 %
Above 3700	30.45 %
Above 3900	7.89 %
Above 4100	0.25 %



15 FREQUENCY ANALYSIS FOR THE MONTH OF AUGUST 2009

Frequency Range in Hz.	Percentage of time
Above 48.00	100 %
Above 48.25	100 %
Above 48.50	100 %
Above 48.75	99.99 %
Above 49.00	94.57 %
Above 49.25	76.79 %
Above 49.50	46.07 %
Above 49.75	22.23 %
Above 50.00	6.56 %
Above 50.25	0.62 %
Above 50.50	0.01 %
Above 50.75	0 %



**16 VOLTAGE PROFILE OF 220 KV SUB-STN. IN DELHI DURING AUGUST 2009**

**All figures in kV**

Date	NARELA		GAZIPUR	
	Max	Min	Max	Min
01-Aug-09	217.70	192.68	221.57	--
02-Aug-09	219.12	--	220.54	--
03-Aug-09	210.87	188.84	214.35	--
04-Aug-09	208.82	188.81	217.18	196.55
05-Aug-09	213.83	193.07	217.96	197.58
06-Aug-09	212.80	191.13	216.41	--
07-Aug-09				
08-Aug-09	210.61	189.46	213.70	195.39
09-Aug-09	212.03	198.36	216.28	196.42
10-Aug-09	212.80	187.26	214.73	190.49
11-Aug-09	208.80	184.17	210.61	193.71
12-Aug-09	208.80	184.17	215.25	191.91
13-Aug-09	--	--	--	--
14-Aug-09				
15-Aug-09	208.80	184.17	222.47	209.96
16-Aug-09	208.80	184.17	224.92	211.90
17-Aug-09	--	--	222.86	209.96
18-Aug-09	--	--	223.12	206.35
19-Aug-09	--	--	224.41	207.64
20-Aug-09	--	--	221.70	202.35
21-Aug-09	--	--	221.44	203.38
22-Aug-09	--	--	215.38	203.64
23-Aug-09	--	--	219.51	202.87
24-Aug-09	--	--	--	--
25-Aug-09	214.09	196.68	216.67	200.29
26-Aug-09	216.02	200.29	219.76	204.93
27-Aug-09	217.31	199.90	219.12	202.35
28-Aug-09	218.35	199.77	220.92	201.19
29-Aug-09	217.06	197.07	217.83	200.16
30-Aug-09	219.12	210.74	220.80	209.45
31-Aug-09	221.44	205.45	220.80	204.80

17 VOLTAGE PROFILE OF 400 KV SUB-STN. IN DELHI DURING AUGUST 2009

All figures in kV

Date	400kV Bamnauli Grid Sub-Station				
	Max KV	Max Time	Min KV	Min Time	Average KV
01-Aug-09	404.03	07.17.23	--	--	396.62
02-Aug-09	--	--	--	--	--
03-Aug-09	388.78	19.30.56	--	--	380.68
04-Aug-09	396.29	06.42.42	364.63	17.17.31	381.33
05-Aug-09	400.27	18.56.22	370.49	01.33.38	384.48
06-Aug-09	396.76	06.42.42	366.51	14.21.16	382.00
07-Aug-09	--	--	--	--	--
08-Aug-09	393.24	06.04.36	364.40	15.54.09	376.46
09-Aug-09	396.76	19.00.13	369.32	22.24.53	382.35
10-Aug-09	393.47	07.07.38	357.36	16.26.37	375.77
11-Aug-09	389.96	--	361.58	--	378.41
12-Aug-09	--	--	--	--	--
13-Aug-09	--	--	--	--	--
14-Aug-09	--	--	--	--	--
15-Aug-09	--	--	--	--	--
16-Aug-09	--	--	--	--	--
17-Aug-09	--	--	--	--	--
18-Aug-09	--	--	--	--	--
19-Aug-09	--	--	--	--	--
20-Aug-09	--	--	--	--	--
21-Aug-09	--	--	--	--	--
22-Aug-09	--	--	--	--	--
23-Aug-09	--	--	--	--	--
24-Aug-09	--	--	--	--	--
25-Aug-09	398.40	13.02.20	373.31	11.51.54	387.21
26-Aug-09	404.26	18.03.31	377.29	11.38.39	391.88
27-Aug-09	404.26	18.58.25	374.01	11.29.50	392.55
28-Aug-09	403.79	06.02.42	374.01	11.42.24	392.57
29-Aug-09	400.98	06.04.27	372.60	11.52.48	391.32
30-Aug-09	407.31	06.42.12	387.85	12.38.43	397.59
31-Aug-09	407.78	07.49.27	379.64	11.16.21	396.82

Date	400kV Bawana Grid Sub-Station				
	Max KV	Max Time	Min KV	Min Time	Average KV
01-Aug-09	408.01	07.17.43	373.78	14.38.57	392.91
02-Aug-09	411.06	07.35.45	377.06	22.53.09	392.76
03-Aug-09	398.40	07.54.37	370.26	23.23.39	384.34
04-Aug-09	399.10	08.00.55	371.43	17.17.31	386
05-Aug-09	406.37	18.56.02	376.36	01.07.27	390.99
06-Aug-09	403.09	08.05.55	374.71	14.21.56	389.15
07-Aug-09	--	--	--	--	--
08-Aug-09	399.10	08.03.35	370.96	12.22.39	383.93
09-Aug-09	402.15	19.00.13	376.36	22.24.53	388.77
10-Aug-09	398.63	--	365.57	--	382.37
11-Aug-09	396.29	19.16.52	368.62	--	384.70
12-Aug-09	--	--	--	--	--
13-Aug-09	--	--	--	--	--
14-Aug-09	--	--	--	--	--
15-Aug-09	--	--	--	--	--
16-Aug-09	--	--	--	--	--
17-Aug-09	--	--	--	--	--
18-Aug-09	--	--	--	--	--
19-Aug-09	--	--	--	--	--
20-Aug-09	--	--	--	--	--
21-Aug-09	--	--	--	--	--
22-Aug-09	--	--	--	--	--
23-Aug-09	--	--	--	--	--
24-Aug-09	--	--	--	--	--
25-Aug-09	401.45	13.02.20	377.29	11.51.54	390.62
26-Aug-09	406.84	18.04.31	379.40	11.38.49	394.46
27-Aug-09	408.01	18.58.45	378.23	11.30.00	395.16
28-Aug-09	406.37	18.01.55	378.00	11.42.14	395.85
29-Aug-09	405.67	18.14.29	378.00	--	395.51
30-Aug-09	409.65	06.42.22	390.43	11.51.51	401.74
31-Aug-09	412.23	07.49.27	386.67	11.16.11	402.42

18 **DETAILS OF LUMPED CAPACITORS AT NEAREST 220 KV SUBSTATION**  
a) **Delhi Transco Limited (DTL)**

Name of the Sub-stn	Voltage (KV)	Installed Capacity (MVAR)	Working Capacity (MVAR)	Remarks
Patparganj	66	20	20	
	66	20	20	
	33	10	10	
	33	10	10	
	11	5.04	5.04	
Kashmere Gate	11	5.04	5.04	
Gazipur	66	20	20	
	66	20	20	
	11	5.04	5.04	
Okhla	66	20	20	
	66	20	20	
	66	20	20	
	33	10	10	
	11	5.04	5.04	
Lodhi Road	33	10	10	
	33	10	10	
	11	5.976	0	
Sarita Vihar	66	20	20	
	11	5.04	5.04	
Vasant Kunj	66	20	20	
	66	20	20	
	11	5.04	5.04	
Mehrauli	66	20	20	
	66	20	20	
	66	20	20	
	66	20	20	
	11	5.04	5.04	
Najafgarh	66	20	20	
	66	20	20	
	66	20	20	
	11	5.04	5.04	
Narela	66	20	20	
	66	20	20	
	11	5.04	5.04	

Name of the sub-stn	Voltage (KV)	Installed Capacity (MVAR)	Working Capacity (MVAR)	Remarks
Shalimar Bagh	33	10	10	
	33	10	10	
	33	10	10	
	33	10	10	
	11	6	6	
Rohini	66	20	20	
	66	20	20	
	11	6	6	
Gopalpur	33	10	10	
	33	10	10	
	33	10	10	
	11	5.04	5.04	
Subzi Mandi	11	6	6	
Kanjhawala	66	20	20	
	11	5.04	5.04	
Park Street	66	20	20	
	33	10	10	
	33	10	10	
Papankalan-I	66	20	20	
	11	5.04	5.04	
Naraina	33	10	10	
	33	10	10	
	11	5.04	5.04	
	Total Capacity	749.496	743.700	

## B. IPGCL

Name of the sub-stn	Voltage (KV)	Installed Capacity (MVAR)	Working Capacity (MVAR)	Remarks
IP	33	10	10	
	33	10	10	
	33	10	10	
	33	10	0	OUT SINCE 08.04.2005. CELLS DAMAGED, ORDER PLACED ON BHEL
RPH	11	5.04	5.04	
	33	10	10	
	33	10	10	
	Total Capacity	65.04	55.04	



Sl. No	Name of the Grid S/Sub-Station	INSTALLED CAPACITY IN MVAR			
		66KV	33kV	11kV	TOTAL
<b>1</b>	<b>IP STATION</b>		30		<b>30</b>
1	Kamla Market			9.65	<b>9.65</b>
2	Minto Road			5.45	<b>5.45</b>
3	GB Pant Hosp			5.45	<b>5.45</b>
4	Delhi Gate			10.9	<b>10.9</b>
5	Tilakmarg			5.04	<b>5.04</b>
6	Electric Lane			5.04	<b>5.04</b>
7	Cannaught Place			5.04	<b>5.04</b>
8	Kilokri		10.08	10.48	<b>20.56</b>
9	NDSE				
10	AIIMS		13.26	5.04	<b>18.3</b>
11	Nizamuddin			5.04	<b>5.04</b>
12	Exhibition-I		10		<b>10</b>
13	Exhibition-II				
14	Defence Colony			10.9	<b>10.9</b>
15	IG Stadium		10.08		<b>10.08</b>
16	Lajpat Nagar			5.04	<b>5.04</b>
					<b>156.49</b>
<b>2</b>	<b>IP Extn.</b>				
1	School Lane			5.04	<b>5.04</b>
2	Scindia House			5.04	<b>5.04</b>
3	Vidyut Bhawan			10.08	<b>10.08</b>
4	Nirman Bhawan			5.04	<b>5.04</b>
5	Dalhousie Road			5.04	<b>5.04</b>
					<b>30.24</b>
<b>3</b>	<b>RPH Station</b>		20	5.04	<b>25.04</b>
1	Lahori Gate			10.45	<b>10.45</b>
2	Jama Masjid			5.03	<b>5.03</b>
3	Kamla Market			5.45	<b>5.45</b>
4	Minto Road			5.45	<b>5.45</b>
5	GB Pant Hosp			5.03	<b>5.03</b>
6	IG Stadium			5.45	<b>5.45</b>
					<b>61.9</b>

SI. No	Name of the Grid S/Sub-Station	INSTALLED CAPACITY IN MVAR			
		66KV	33kV	11kV	TOTAL
<b>4</b>	<b>Park Street S/stn</b>	20	20		<b>40</b>
1	Shastri Park		10.896	5.45	<b>16.346</b>
2	Faiz Road			10.9	<b>10.9</b>
3	Motia Khan			16.3	<b>16.3</b>
4	Parshad Nagar			16.3	<b>16.3</b>
5	Anand Parbat			10.8	<b>10.8</b>
6	Shankar Road			5.04	<b>5.04</b>
7	Rama Road			14.4	<b>14.4</b>
8	Baird Road			10.08	<b>10.08</b>
9	Hanuman Road			5.04	<b>5.04</b>
10	Pusa			7.2	<b>7.2</b>
11	Ridge Valley				
12	SJ Airport			5.04	<b>5.04</b>
13	B. D. Marg				
					<b>157.446</b>
<b>5</b>	<b>Naraina S/stn</b>		20	5.04	<b>25.04</b>
1	DMS			10.45	<b>10.45</b>
2	Mayapuri		10.87	5	<b>15.87</b>
3	Inderpuri		13.27	5.04	<b>18.31</b>
4	Rewari line			7.2	<b>7.2</b>
5	Khyber Lane		10		<b>10</b>
6	Kirbi Place			5	<b>5</b>
					<b>91.87</b>
<b>6</b>	<b>Mehrauli S/stn</b>	80		5.04	<b>85.04</b>
1	Adchini			15.12	<b>15.12</b>
2	Andheria Bagh			10.85	<b>10.85</b>
3	IIT			10.9	<b>10.9</b>
4	JNU		10.03	10.08	<b>20.11</b>
5	Bijwasan			10.08	<b>10.08</b>
6	DC Saket		10.08	4.54	<b>14.62</b>
7	Malviya Nagar	21.79			<b>21.79</b>
8	C Dot				
9	Vasant kunj B-Blk	21.79		10.9	<b>32.69</b>
10	Vasant kunj C-Blk		5.45	<b>5.45</b>	<b>5.45</b>
11	Palam				
12	IGNOU				
13	R. K. Puram-I			10.08	<b>10.08</b>
14	Vasant Vihar			10.08	<b>10.08</b>
15	Bhikaji Cama Place	10	10.08	<b>20.08</b>	<b>20.08</b>
<b>7</b>	<b>Vasantkunj S/stn</b>	40		5.04	<b>45.04</b>
1	R. K. Puram-II			3.6	<b>3.6</b>
2	Vasant kunj C-Blk		5.04	<b>5.04</b>	<b>5.04</b>
3	Vasant kunj D-Blk	20.16		10.25	<b>30.41</b>
4	Race Course			5.04	<b>5.04</b>
5	Bapu Dhaam			5.04	<b>5.04</b>
6	Nehru Park			5.04	<b>5.04</b>
7	Ridge Valley				
					<b>99.21</b>

Sl. No	Name of the Grid S/Sub-Station	INSTALLED CAPACITY IN MVAR			
		66KV	33kV	11kV	TOTAL
<b>8</b>	<b>Okhla S/stn</b>	60	10	5.04	<b>75.04</b>
1	Balaji			7.2	<b>7.2</b>
2	East of Kailash			10	<b>10</b>
3	Alaknanda			10.85	<b>10.85</b>
4	Malviya Nagar		20	10.49	<b>30.49</b>
5	Masjid Moth			15.94	<b>15.94</b>
6	Nehru Place			21.35	<b>21.35</b>
7	Okhla Ph-I	21.79		10.9	<b>32.69</b>
8	Okhla Ph-II		20.93	10.49	<b>31.42</b>
9	Shivalik			10.9	<b>10.9</b>
10	Batra			15.8	<b>15.8</b>
11	VSNL			10.8	<b>10.8</b>
12	Siri Fort			10.49	<b>10.49</b>
13	Tuglakabad			10.8	<b>10.8</b>
					<b>293.77</b>
<b>9</b>	<b>Lodhi Road S/stn</b>	20		<b>20</b>	<b>20</b>
1	Defence Colony				
2	Hudco			10.9	<b>10.9</b>
3	Lajpat Nagar			5.04	<b>5.04</b>
4	Nizamuddin			5.45	<b>5.45</b>
5	Vidyut Bhawan			10.08	<b>10.08</b>
6	Kidwai Nagar			5.04	<b>5.04</b>
7	Ex. Gr. II				
8	IHC				
					<b>56.51</b>
<b>10</b>	<b>Sarita Vihar S/stn</b>	20		5.04	<b>25.04</b>
1	Sarita Vihar			10.08	<b>10.08</b>
2	MCIE			10.06	<b>10.06</b>
3	Mathura Road	20.16		10.08	<b>30.24</b>
4	Jamia Millia			5.4	<b>5.4</b>
5	Sarai Julena			10.9	<b>10.9</b>
					<b>91.72</b>
<b>11</b>	<b>South of Wazirabad</b>				
1	Bhagirathi		10.03	10.9	<b>20.93</b>
2	Ghonda	21.79	22.56	15.94	<b>60.29</b>
3	Seelam Pur		10.08	21.39	<b>31.47</b>
4	Dwarkapuri			10.06	<b>10.06</b>
5	Nandnagri	20.16		16.35	<b>36.51</b>
6	Yamuna Vihar			10.8	<b>10.8</b>
7	East of Loni Road			10.8	<b>10.8</b>
8	Shastri Park			10.9	<b>10.9</b>
9	Karawal Nagar			5.4	<b>5.4</b>
					<b>197.16</b>

Sl. No	Name of the Grid S/Sub-Station	INSTALLED CAPACITY MVAR			
		66KV	33kV	11kV	TOTAL
<b>12</b>	<b>Geeta Colony</b>				
1	Geeta Colony			10.49	<b>10.49</b>
2	Kanti Nagar			10.9	<b>10.9</b>
3	Kailash Nagar			15.48	<b>15.48</b>
4	Seelam Pur				
5	Shakar Pur				
					<b>36.87</b>
<b>13</b>	<b>Gazipur S/stn</b>	40		5.04	<b>45.04</b>
1	Dallupura	21.79		10.9	<b>32.69</b>
2	Vivek Vihar			9.57	<b>9.57</b>
3	GT Road			10.85	<b>10.85</b>
4	Kondli	20.16		10.45	<b>30.61</b>
5	MVR-I			10.9	<b>10.9</b>
6	MVR-II	20.16		10.9	<b>31.06</b>
7	PPG Ind. Area			10.06	<b>10.06</b>
					<b>180.78</b>
<b>14</b>	<b>Patparganj S/stn</b>	40	20	5.04	<b>65.04</b>
1	GH-I	19.89		10.45	<b>30.34</b>
2	GH-II	20.09		10.9	<b>30.99</b>
3	CBD		10.03	14.94	<b>24.97</b>
4	Guru Angad Nagar			15.49	<b>15.49</b>
5	Karkadooma		10.8	10.44	<b>21.24</b>
6	Preet Vihar			10.07	<b>10.07</b>
7	CBD-II			10.8	<b>10.8</b>
8	Shakarpur			5.4	<b>5.4</b>
9	Jhilmil			10.8	<b>10.8</b>
10	Dilshad Garden	20.16		16.35	<b>36.51</b>
11	Khichripur	21.79		10.49	<b>32.28</b>
12	Mother Dairy				
13	Scope Building				
14	Vivek Vihar				
					<b>293.93</b>
<b>15</b>	<b>Najafgarh S/stn</b>	60		5.04	<b>65.04</b>
1	A4 Paschim Vihar			10.9	<b>10.9</b>
2	Nangloi	21.73		15.85	<b>37.58</b>
3	Nangloi W/W	20.89		5.45	<b>26.34</b>
4	Pankha Road			15.69	<b>15.69</b>
5	Jaffarpur			15.49	<b>15.49</b>
6	Inst. Area Janakpuri			15.9	<b>15.9</b>
7	Paschimpuri		10.05	15.53	<b>25.58</b>
8	Paschim Vihar	41.83		15.44	<b>57.27</b>
9	Mukherjee Park			15.49	<b>15.49</b>
10	Udyog Nagar			5.04	<b>5.04</b>
11	Choukhandi			10.08	<b>10.08</b>
					<b>300.4</b>

Sl. No	Name of the Grid S/Sub-Station	INSTALLED CAPACITY			
		66KV	33kV	11kV	TOTAL
<b>16</b>	<b>Pappankalan-I S/stn</b>	20		5.04	<b>25.04</b>
1	Bindapur Grid G-3 PPK	21.73		15.9	<b>37.63</b>
2	Bodella-I	20.1		15.9	<b>36</b>
3	Bodella-II	21.73		14.53	<b>36.26</b>
4	DC Janakpuri			10.04	<b>10.04</b>
5	G-2 PPK			10.9	<b>10.9</b>
6	G-5 PPK			15.53	<b>15.53</b>
7	G-6 PPK			5.45	<b>5.45</b>
8	Hari Nagar	21.18		10.49	<b>31.67</b>
					<b>208.52</b>
<b>17</b>	<b>BBMB Rohtak Road</b>				
1	S.B. Mill			10.08	<b>10.08</b>
2	GTK Road			12.64	<b>12.64</b>
3	Ram Pura			12.25	<b>12.25</b>
4	Rohtak Road			10.08	<b>10.08</b>
5	Vishal		10.05	5	<b>15.05</b>
6	Madipur			10.43	<b>10.43</b>
7	Sudershan Park			10.99	<b>10.99</b>
					<b>81.52</b>
<b>18</b>	<b>Shalimarbagh S/stn</b>		40	6	<b>46</b>
1	S.G.T. Nagar			13.15	<b>13.15</b>
2	Wazirpur-1			18.8	<b>18.8</b>
3	Wazirpur-2			14.4	<b>14.4</b>
4	Shalimarbagh			5.44	<b>5.44</b>
5	Ashok Vihar			20.47	<b>20.47</b>
6	Rani Bagh			14.4	<b>14.4</b>
7	Haiderpur			5.95	<b>5.95</b>
					<b>138.61</b>
<b>19</b>	<b>Subzimandi S/stn</b>			6	<b>6</b>
1	Shakti Nagar			5.04	<b>5.04</b>
2	Gulabibagh			7.32	<b>7.32</b>
3	Shahzadabagh			18.19	<b>18.19</b>
4	Tripolia			14.4	<b>14.4</b>
5	B. G. Road				
					<b>50.95</b>
<b>20</b>	<b>Narela S/stn</b>	40		5.04	<b>45.04</b>
1	A-7 Narela			14.4	<b>14.4</b>
2	AIR Kham pur			13.15	<b>13.15</b>
3	Badli	20		5.95	<b>25.95</b>
4	DSIDC Narela	26.64		5.95	<b>32.59</b>
5	DSIDC Narela-2			14.4	<b>14.4</b>
6	Jahangirpuri				
					<b>145.53</b>

Sl. No	Name of the Grid S/Sub-Station	INSTALLED CAPACITY IN MVAR			
		66KV	33kV	11kV	TOTAL
<b>21</b>	<b>Gopalpur S/stn</b>		30	5.04	<b>35.04</b>
1	Azad Pur			22.8	<b>22.8</b>
2	Hudson Lane			5.95	<b>5.95</b>
3	Wazirabad			7.2	<b>7.2</b>
4	Indra Vihar			5.95	<b>5.95</b>
5	Tri Nagar			14.4	<b>14.4</b>
6	GTK Road			12.64	<b>12.64</b>
7	Jahangirpuri	26.64	20	5.95	<b>52.59</b>
8	Civil lines				
					<b>156.57</b>
<b>22</b>	<b>Rohini S/stn</b>	40		6	<b>46</b>
1	Rohini Sec-24 Ckt-I			14.4	<b>14.4</b>
2	Rohini Sec-24 Ckt-II	26.64		5.95	<b>32.59</b>
3	Rohini-1			5.95	<b>5.95</b>
4	Rohini-2			13.15	<b>13.15</b>
5	Rohini-3			5.95	<b>5.95</b>
6	Rohini-4			11.9	<b>11.9</b>
7	Rohini-5			13.15	<b>13.15</b>
8	Rohini-6	26.64		5.95	<b>32.59</b>
9	Mangolpuri-1			20.35	<b>20.35</b>
10	Mangolpuri-2	26.64		6	<b>32.64</b>
11	Saraswati Garden			11.9	<b>11.9</b>
12	Pitam Pura-1	20	20	12.6	<b>52.6</b>
13	Pitam Pura-2			5.95	<b>5.95</b>
14	Pitam Pura-3			7.32	<b>7.32</b>
					<b>306.44</b>
<b>23</b>	<b>Kanjhawala S/stn</b>	20		5.04	<b>25.04</b>
1	Bawana Clear Water				
2	Pooth Khoord				
					<b>25.04</b>
<b>24</b>	<b>BAWANA S/stn</b>				
1	Bawana S/stn No. 6			14.64	<b>14.64</b>
2	Bawana S/stn No. 7			7.2	<b>7.2</b>
					<b>21.84</b>
<b>25</b>	<b>Kashmeregata S/stn</b>			5.04	<b>5.04</b>
1	Civil lines			12	<b>12</b>
2	Town Hall			10.49	<b>10.49</b>
3	Fountain			5.45	<b>5.45</b>
					<b>32.98</b>
<b>26</b>	<b>Pappankalan-II</b>				
1	DMRC-I				
2	DMRC-II				
					<b>3483.186</b>

**20 DETAILS OF BREAK-DOWNS**

SLN O	OCCURRENCE OF BREAK-DOWN		DETAILS OF THE BREAKDOWN	TIME OF RESTORATION		REMARKS
	DATE	TIME		DATE	TIME	
01	01.08.09	06.40	220/66KV 100MVA PR. TR.-II AT MEHRAULI	01.08.09	06.53	TR. TRIPPED ON 86 ALONG WITH 66KV I/C-II WHICH TRIPPED ON 64R.
02	01.08.09	10.10	220/66KV 100MVA PR. TR.-II AT NAJAFGARH	01.08.09	10.19	TR. TRIPPED ON 86.
03	02.08.09	14.46	220KV PANIPAT – NARELA CKT-I, II & III	02.08.09		220KV PANIPAT CKT-I, II & III TRIPPED ON FOLLOWING INDICATIONS AT NARELA : CKT-I : NO TRIPPING CKT-II : 95CA, 95CC, 186, 186 CKT-III : 30G, 30H, 30K, 86X <sub>2</sub>
04	02.08.09	15.28	220KV GOPALPUR – SUBZI MANDI CKT-II	02.08.09	15.39	CKT. TRIPPED ON DIST PROT `Y&B` PHASE ZONE-I AT GOPALPUR.
05	02.08.09	19.52	66/11KV 20MVA PR. TR.-I AT PAPPANKALAN-II	02.08.09	23.20	TR. TRIPPED ON LBB PROTECTION, REF, LB MASTER RELAY.
06	03.08.09	10.13	220/66KV 100MVA PR. TR.-II AT NARELA	03.08.09	10.45	TR. TRIPPED ON 86 AT NARELA ALONG WITH 66KV I/C-II WHICH TRIPPED ON 86.
07	03.08.09	15.20	220KV BTPS – OKHLA CKT-I & II	04.08.09	01.59	CKT-I TRIPPED ON DIST PROT ZONE-I, 86T, 86T AT OKHLA. NO TRIPPING ON CKT-II. `Y` PHASE TOP CLAMP OF 220KV BUS COUPLER BURNT.
08	05.08.09	10.28	220KV GOPALPUR – SUBZI MANDI CKT-II	05.08.09	10.38	CKT. TRIPPED ON DIST PROT `RYB` PHASE ZONE-I AT GOPALPUR. NO TRIPPING AT SUBZI MANDI.
09	05.08.09	13.42	220KV BAMNAULI – PAPPANKALAN-II CKT- II	05.08.09	17.10	30C (LOW AIR PRESSURE RELAY) AT BAMNAULI.
10	10.08.09	19.08	220KV IP –PATPAR GANJ CKT-I	10.08.09	19.22	CKT. TRIPPED ON DIST PROT THREE PHASE ZONE-I AT IP AND ON ACTIVE GROUP-I, DIST PROT `B` PHASE ZONE-I AT PATPARGANJ.
11	10.08.09	23.50	66/11KV 20MVA PR. TR.-III AT PAPPANKALAN-I	11.08.09	00.25	TR. TRIPPED ON 51RYB, 86.
12	10.08.09	23.58	66/11KV 20MVA PR. TR.-II AT NAJAFGARH	10.08.09	24:00	TR. TRIPPED ON O/C `B` PHASE, 86X <sub>1</sub>
13	11.08.09	19.50	66/11KV 20MVA PR. TR.-II AT NAJAFGARH	11.08.09	19.57	TR. TRIPPED ON O/C `B` PHASE
14	12.08.09	18.48	220KV BAMNAULI – NARAINA CK-II	12.08.09	18.58	CKT. TRIPPED ON DIST PROT `R&Y` PHASE, 186, 186 AT BAMNAULI. NO TRIPPING AT NARAINA.
15	12.08.09	19.20	66/11KV 20MVA PR. TR.-II AT NAJAFGARH	12.08.09	19.40	TR. TRIPPED ON O/C.
16	13.08.09	09.51	220KV PRAGATI – SARITA VIHAR CKT.	13.08.09	10.05	CKT. TRIPPED ON DIST PROT `C` PHASE ZONE-I, 186, 186 AT PRAGATI AND ON DIST PROT `C` PHASE, 186A, 186, AUTO RECLOSE LOCK OUT AT SARITA VIHAR.

SLN O	OCCURRENCE OF BREAK-DOWN		DETAILS OF THE BREAKDOWN	TIME OF RESTORATION		REMARKS
	DATE	TIME		DATE	TIME	
17	13.08.09	17.58	220KV PATPARGANJ – GEETA COLONY CKT-I	13.08.09	18.10	CKT. TRIPPED ON DIST PROT `B` PHASE ZONE-I AT PATPARGANJ AND ON MAIN-I : ACTIVE GROUP-I, DIST PROT `BC` PHASE ZONE-I, O/C86, MAIN-II : DIST PROT `BC` PHASE ZONE-I AT GEETA COLONY.  THE TRIPPING IS DUE TO KITE FLYING ACTIVITIES.
18	13.08.09	18.15	220KV PATPARGANJ – GEETA COLONY CKT-I	13.08.09	18.28	CKT. TRIPPED ON DIST PROT `ABC` PHASE ZONE-I AT PATPARGANJ AND ON MAIN-I : ACTIVE GROUP-I, DIST PROT `ABC` PHASE ZONE-I, O/C, MAIN- II : DIST PROT `ABC` PHASE ZONE-I AT GEETA COLONY.  THE TRIPPING IS DUE TO KITE FLYING ACTIVITIES NEAR GANESH NAGAR AREA.
19	13.08.09	19.40	220/33KV 100MVA PR. TR.-IV AT OKHLA	13.08.09	00.28	220/33KV 100MVA PR. TR.-IV TRIPPED ON INSTANTANEOUS E/F ALONG WITH 33KV I/C-III & IV WHICH TRIPPED ON 51NX AND E/F, 86 RESPECTIVELY. `B` PHASE CT OF 33KV I/C-IV FLASHED.  33KV I/C-III & IV CHARGED AT 19.55HRS. AND 00.28HRS (14.08.2009) RESPECTIVLY.
20	14.08.09	03.48	220KV BAMNAULI – NAJAFGARH CKT-I & II	14.08.09	03.57	BOTH CKT. TRIPPED ON 186 AT NAJAFGARH. NO TRIPPING AT BAMNAULI.
21	14.08.09	10.48	220KV MANDOLA – GOPALPUR(T-OFF) – WAZIRABAD CKT-IV	14.08.09	10.54	CKT. TRIPPED ON 86, 86, 95C, DIST PROT ZONE-I AT GOPALPUR. NO TRIPPING AT MANDOLA AND WAZIRABAD END.
22	14.08.09	10.52	220/66KV 100MVA PR. TR.-II AT WAZIRABAD	20.08.09	11.35	TR. TRIPPED ON E/F, 87T, DIFFERENTIAL, REF LV, HV.
23	15.08.09	15.28	220KV BTPS – OKHLA CKT-II	15.08.09	15.36	CKT. TRIPPED ON `B` PHASE E/F AT BTPS. NO TRIPPING AT OKHLA.
24	15.08.09	15.41	220KV MANDOLA – GOPALPUR CKT-I	15.08.09	16.38	CKT. TRIPPED ON DIST PROT `R` PHASE AT MANDOLA. NO TRIPPING AT GOPLAPUR.
25	15.08.09	16.45	220KV PATPARGANJ – GEETA COLONY CKT-I	15.08.09	16.52	CKT. TRIPPED ON DIST PROT `BC` PHASE ZONE-I AT GEETA COLONY. NO TRIPPING AT PATPARGANJ.
26	15.08.09	16..59	220KV PATPARGANJ – GEETA COLONY CKT-I	15.08.09	17.03	CKT. TRIPPED ON DIST PROT `BC` PHASE ZONE-I AT GEETA COLONY. NO TRIPPING AT PATPARGANJ.
27	15.08.09	18.07	220KV BTPS – NOIDA – GAZIPUR CKT.	15.08.09	18.25	CKT. TRIPPED ON DIST PROT ANCN ZONE-II, A&C PHASE AT BTPS. NO TRIPPING AT GAZIPUR.
28	15.08.09	18.35	220KV PATPARGANJ – GEETA COLONY CKT-I	15.08.09	18.38	CKT. TRIPPED ON DIST PROT `AB` PHASE ZONE-I AT GEETA COLONY. NO TRIPPING AT PATPARGANJ.
29	16.08.09	05.55	66/11KV 20MVA PR. TR.-I AT PAPPANKALAN-I	16.08.09	12.35	TR. TRIPPED ON DIFFERENTIAL, 87A, 87B, `A&B` PHASE E/F, 64RLV, 86.
30	16.08.09	12.12	220KV PATPARGANJ – GEETA COLONY CKT-II	16.08.09	12.28	CKT. TRIPPED ON ACTIVE GROUP-I, DIST PROT ABC PHASE ZONE-I, 30B, 27RYB, 86, 30E AT GEETA COLONY END ONLY.



SLN O	OCCURRENCE OF BREAK-DOWN		DETAILS OF THE BREAKDOWN	TIME OF RESTORATION		REMARKS
	DATE	TIME		DATE	TIME	
31	16.08.09	13.45	220KV BAWANA – SHALIMAR BAGH CKT-II	16.08.09	13.50	CKT. TRIPPED ON DIST PROT ZONE-III AT BAWANA. NO TRIPPING AT SHALIMAR BAGH.
32	16.08.09	14.03	220KV WAZIRABAD – GEETA COLONY CKT-I	16.08.09	14.08	CKT. TRIPPED ON RXME18, DIST PROT 'RY' PHASE ZONE-I AT WAZIRABAD. NO TRIPPING AT GEETA COLONY.
33	16.08.09	13.45	220KV MANDOLA – GOPALPUR CKT-I	16.08.09	14.35	CKT. TRIPPED ON DIST PROT 'YB' PHASE AT GOPALPUR END.
34	16.08.09	14.57	220KV GEETA COLONY – PATPARGANJ CKT-I	16.08.09	15.15	CKT. TRIPPED ON ACTIVE GROUP-I, DIST PROT 'ABC' PHASE AT GEETA COLONY. NO TRIPPING AT PATPARGANJ.
35	16.08.09	16.49	220KV MANDOLA – GOPALPUR CKT-I	16.08.09	20.50	CKT. TRIPPED ON DIST PROT 'RY' PHASE ZONE-I AT MANDOLA. NO TRIPPING AT GOPALPUR. CKT. TRIED TO CLOSE BUT DID NOT HOLD. CKT. FINALLY CHARGED AT 20.50HRS.
36	16.08.09	18.45	220KV NARELA – ROHTAK ROAD CKT-II	16.08.09	19.58	CKT. TRIPPED ON DIST PROT ABC' PHASE ZONE-I AT NARELA AND ON DIST PROT 'ABC' PHASE ZONE-I AT ROHTAK ROAD.
37	16.08.09	18.31	220KV MANDOLA – WAZIRABAD CKT-IV	16.08.09	18.50	CKT. TRIPPED WITHOUT INDICATION AT WAZIRABAD.
38	16.08.09	18.31	220KV WAZIRABAD – KASHMIRI GATE CKT- II	16.08.09	18.56	CKT. TRIPPED WITHOUT INDICATION AT WAZIRABAD.
39	16.08.09	18.31	220/66KV 100MVA PR. TR.-I & II AT WAZIRABAD	16.08.09	19.08	BOTH TRANSFORMERS TRIPPED WITHOUT INDICATION ALONGWITH 66KV I/C-I WHICH TRIPPED ON E/F. 100MVA PR. TR.-I & III CHARGED AT 19.08HRS. & 19.03HRS RESPECTIVELY.
40	16.08.09	18.31	220KV GEETA COLONY –PATPARGANJ CKT-I	16.08.09	18.42	CKT. TRIPPED ON MAIN-I : ACTIVE GROUP-I, DIST PROT 'ABC' PH. ZONE-I, 27RYB, 86, MAIN-II ON DIST PROT 'ABC' PHASE ZONE-I AT GEETA COLONY. NO TRIPPING AT PATPARGANJ END.
41	16.08.09	19.00	220KV MANDOLA – WAZIRABAD CKT-I	16.08.09	19.35	CKT. TRIPPED ON DIST PROT 'B' PHASE ZONE-III AT MANDOLA AND ON DIST PROT 'ABC' PHASE ZONE-I, AUTO RECLOSE LOCK OUT, RXME18 AT WAZIRABAD.
42	16.08.09	20.31	33/11KV 16MVA PR. TR.-I AT SUBZI MANDI	16.08.09	20.35	TR. TRIPPED ON 30G, 30H, 30J, 30K, 30L, 86, O/C ALL PHASE ALONG WITH 11KV I/C-I WHICH TRIPPED ON O/C 'R' PHASE
43	17.08.09	18.22	220KV MANDOLA – WAZIRABAD CKT-I & IV	17.08.09	18.32	BOTH CKTS TRIPPED WITHOUT INDICATION AT WAZIRABAD.
44	17.08.09	19.22	220KV WAZIRABAD – GEETA COLONY CKT-II	17.08.09	18.34	CKT. TRIPPED WITHOUT INDICATION AT BOTH ENDS.
45	17.08.09	18.22	220/66KV 100MVA PR. TR.-I & III AT WAZIRABAD.	17.08.09	18.35	BOTH TRANSFORMERS TRIPPED WITHOUT INDICATION
46	17.08.09	18.22	220KV WAZIRABAD – KASHMIRI GATE CKT- II	17.08.09	18.34	CKT. TRIPPED WITHOUT INDICATION AT WAZIRABAD.

SLN O	OCCURRENCE OF BREAK-DOWN		DETAILS OF THE BREAKDOWN	TIME OF RESTORATION		REMARKS
	DATE	TIME		DATE	TIME	
47	17.08.09	18.22	220KV PATPARGANJ – GEETA COLONY CKT-I	17.08.09	18.35	CKT. TRIPPED ON MAIN-I : ACTIVE GROUP-I, DIST PROT `ABC` PHASE ZONE-I MAIN-II : DIST PROT `ABC` PHASE ZONE-I AT GEETA COLONY. NO TRIPPING AT PATPARGANJ.
48	17.08.09	19.43	220KV MANDOLA – GOPALPUR CKT-I	18.08.09	18.32	CKT. TRIPPED ON DIST PROT `Y&B` PHASE ZONE-I AT MANDOLA.
49	18.08.09	07.37	220KV MANDOLA – NARELA CKT-I	18.08.09		CKT. TRIPPED ON LOW GAS PRESSURE AT NARELA. CKT. TRIED TO CLOSE AT 08.05HRS. BUT DID NOT HOLD. AND TRIPPED ON POLE DISCREPANCY.
50	18.08.09	12.45	220KV BAMNAULI – MEHRAULI CKT-II	18.08.09	13.08	CKT. TRIPPED ON DIST PROT `C` PHASE, AUTO RECLOSE LOCK OUT, 186A&B AT BAMNAULI AND ON DIST PROT `C` PHASE ZONE-I AT MEHRAULI.
51	19.08.09	07.55	220/33KV 100MVA PR. TR.-I AT PARK STREET	19.08.09	08.12	TR. TRIPPED ON 86 ALONG WITH 33KV I/C-I WHICH TRIPPED ON E/F, 86.
52	21.08.09	14.41	220KV IP – PRAGATI CKT-I & II	21.08.09	20.55	CKT-I TRIPPED ON VT FAIL ALARM, 67NX, 86T AND CKT-II TRIPPED ON 67NX, 86T, 86T AT PRAGATIEND. CKT-I & II CHARGED AT 15.05HRS. AND 20.55HRS RESPECTIVELY.
53	21.08.09	16.45	220KV SARITA VIHAR – PRAGATI CKT.	21.08.09	16.52	CKT. TRIPPED ON DIST PROT `A` PHASE ZONE-I, 186, 186 AT PRAGATI AND ON DIST PROT `A` PHASE ZONE-I AT SARITA VIHAR.
54	21.08.09	18.05	220KV GOPALPUR – SUBZI MANDI CKT.-I	21.08.09	18.07	CKT. TRIPPED ON DIST PROT `RYB` PHASE ZONE-I AT GOPALPUR. NO TRIPPING AT SUBZI MANDI.
55	21.08.09	19.10	220/66KV 100MVA PR. TR-II AT SARITA VIHAR	21.08.09	20.00	TR. TRIPPED ON E/F, O/C, 86.
56	22.08.09	10.26	220KV BTPS – OKHLA CKT-II	22.08.09	10.34	CKT. TRIPPED ON PHASE TO PHASE (Y- B) FAULT AT BTPS. NO TRIPPING AT OKHLA
57	22.08.09	12.20	220KV BAMNAULI – MEHRAULI CKT-I	23.08.09	01.30	CKT. TRIPPED ON DIST PROT `A` PHASE ZONE-II, AUTO RECLOSE LOCK OUT, 186 AT BAMNAULI AND ON ACTIVE GROUP-I, DIST PROT `A` PHASE ZONE-I AT MEHRAULI.
58	23.08.09	16.16	220KV WAZIRABAD – KASHMIRI GATE CKT- II	23.08.09	16.40	CKT. TRIPPED ON GENERAL TRIP GFC- STF, RXME18 AT WAZIRABAD. NO TRIPPING AT KASHMIRI GATE.
59	23.08.09	17.34	220KV WAZIRABAD – GEETA COLONY CKT-II	23.08.09	17.44	CKT. TRIPPED ON RXME18, REL511, GENERAL TRIP, DIST PROT AT WAZIRABAD AND ON MAIN-I : DIST PROT `ABC` PHASE ZONE-I, MAIN-II : DIST PROT `ABC` PHASE ZONE-I AT GEETA COLONY.
60	23.08.09	18.42	220KV GOPALPUR – SUBZI MANDI CKT-II	23.08.09	18.48	CKT. TRIPPED ON DIST PROT `RYB` PHASE ZONE-I AT GOPALPUR. NO TRIPPING AT SUBZI MANDI.
61	24.08.09	01.55	66/11KV 20MVA PR. TR.-I AT SARITA VIHAR	24.08.09	10.55	TR. TRIPPED ON 30F, `Y` PHASE, 86 ALONG WITH 11KV I/C-I WHICH TRIPPED WITHOUT INDICATION.
62	24.08.09	14.14	66/11KV 20MVA PR. TR.-I AT PAPPANKALAN-II	24.08.09	14.34	TR. TRIPPED ON BACK UP PROTECTION `B` PHASE.

SLN O	OCCURRENCE OF BREAK-DOWN		DETAILS OF THE BREAKDOWN	TIME OF RESTORATION		REMARKS
	DATE	TIME		DATE	TIME	
63	25.08.09	12.40	220KV MANDOLA – GOPALPUR CKT-I	25.08.09	13.00	CKT. TRIPPED ON DIST PROT `YB` PHASE ZONE-II AT MANDOLA AND ON GENERAL TRIP DIST PROT `RYB` PHASE ZONE-I AT GOPALPUR.
64	25.08.09	13.07	220KV WAZIRABAD – KASHMIRI GATE CKT- II	25.08.09	16.36	CKT. TRIPPED ON RXME18, `RYB` PHASE, GENERAL TRIP, GFC-STF AT WAZIRABAD. NO TRIPPING AT KASHMIRI GATE.
65	25.08.09	18.29	220KV GOPALPUR – SUBZI MANDI CKT-II	25.08.09	19.03	CKT. TRIPPED ON DIST PROT `ABC` PHASE ZONE-I AT GOPALPUR. NO TRIPPING AT SUBZI MANDI.
66	25.08.09	18.53	220KV MANDOLA – WAZIRABAD CKT-I& IV	26.08.09	19.15	BOTH CKT. TRIPPED WITHOUT INDICATION AT WAZIRABAD.
67	25.08.09	18.53	220KV WAZIRABAD – GEETA COLONY CKT-II	25.08.09	19.16	CKT. TRIPPED WITHOUT INDICATION AT BOTH END.
68	25.08.09	18.53	220KV WAZIRABAD – KASHMIRI GATE CKT-I & II	25.08.09	19.18	THE FOLLOWING TRIPPINGS OCCURRED :- KASHMIRI GATE CKT-I : `ABC` PHASE GENERAL TRIP KASHMIRI GATE CKT-II : GENERAL TRIP, GFC NO TRIPPING AT KASHMIRI GATE. 220KV KASHMIRI GATE CKT-I & II CHARGED AT 19.18HRS. AND 19.17HRS. RESPECTIVELY.
69	25.08.09	18.53	220/66KV 100MVA PR. TR.-I, II & III AT WAZIRABAD	25.08.09	19.50	TR. TRIPPED DUE TO BUS BAR PROTECTION OPERATION AT WAZIRABAD.
70	26.08.09	08.27	66/11KV 20MVA PR. TR.-III AT WAZIRABAD	26.08.09	10.22	TR. TRIPPED ON OIL TEMP HIGH, 86 ALONG WITH 11KV I/C-III WHICH TRIPPED ON
71	26.08.09	13.10	220/33KV 100MVA PR. TR.-I AT SHALIMAR BAGH	26.08.09	13.17	100MVA PR. TR.-I TRIPPED ON 51N, 51C, O/C, 86 ALONG WITH 33KV I/C-I & II WHICH TRIPPED ON 51A, 51C, 86 AND 51A, 86 RESPECTIVELY. `Y` PHASE COMMON JUMPER OF 20MVA PR. TR., INSULATOR ON 33KV BUS-I FLASHED
72	27.08.09	16.53	220KV PRAGATI – SARITA VIHAR CKT.	27.08.09	17.00	CKT. TRIPPED ON ACTIVE GROUP-I, 186, 186, DIST PROT `ABC` PHASE ZONE-I AT PRAGATI AND ON DIST PROT `C` PHASE ZONE-I AT SARITA VIHAR.
73	27.08.09	17.45	VARIOUS TRIPPINGS IN DTL SYSTEM			DETAILED REPORT ENCLOSED
74	27.08.09	18.55	66/11KV 20MVA PR. TR.-II AT SARITA VIHAR	28.08.09	07.20	TR. TRIPPED ON 51A ALONG WITH 11KV ½ BUS BAR WHICH FLASHED .
75	28.08.09	07.25	66/11KV 20MVA PR. TR.-II AT SARITA VIHAR	28.08.09	08.55	TR. TRIPPED ON 64RHV, 87T, 86.
76	28.09.09	14.18	220KV GOPALPUR – SUBZI MANDI CKT-I	28.08.09	14.28	CKT. TRIPPED ON DIST PROT `RYB` PHASE ZONE-I AT GOPALPUR. NO TRIPPING AT SUBZI MANDI.

## DETAILS OF UNDERFREQUENCY TRIPPINGS

DATE	S N.	TIME IN HRS.		LOAD AFFEC TED IN MW	STAGE / FREQ.	AREAS/ GROUP AFFECTED
		OUT	IN			
01.08.09	1	23:03	23:08	18	<b>Df/Dt Mode</b>	33KV LODI ROAD - LAJPAT NAGAR-II CKT.I&II , 11KV FEEDERS
03.08.09	1	14:40	14:48	74	<b>STAGE-I</b>	66KV NAJAFGARH - G-5 PAPANKALAN CKT. I&II, 11KV FEEDERS, 20MVA PR. TR. -III AT NAJAFGARH 220KV
	2	19:24	20:00	22	<b>STAGE-I</b>	66KV VASANT KUNJ - VASANT KUNJ 'C' BLK CKT. I & II
	3	20:23	21:23	29	<b>STAGE-I</b>	66KV VASANT KUNJ-VASANT KUNJ 'D' BLOCK CKT I&II 02 NOS 11KV FEEDER
04.08.09	1	14:12	14:46	63	<b>STAGE-I</b>	33KV LODI ROAD - DEFENCE COLONY CKT. I & II, 11KV FEEDERS, 33KV LODI ROAD - NDSE CKT. 33KV LODI ROAD - NIZAMUDDIN CKT.
	2	14:52	15:30	63	<b>STAGE-I</b>	33KV LODI ROAD - DEFENCE COLONY CKT. I & II, 11KV FEEDERS, 33KV LODI ROAD - NDSE CKT. 33KV LODI ROAD - NIZAMUDDIN CKT.
	3	20:15	20:30	21	<b>STAGE-I</b>	66KV VASANT KUNJ - VASANT KUNJ 'C' BLK CKT. I & II
	4	20:35	20:58	21	<b>STAGE-I</b>	66KV VASANT KUNJ - VASANT KUNJ 'C' BLK CKT. I & II
	5	21:05	21:12	21	<b>STAGE-I</b>	66KV VASANT KUNJ - VASANT KUNJ 'C' BLK CKT. I & II
	6	21:10	22:10	14	<b>STAGE-I</b>	66KV VASANT KUNJ - VASANT KUNJ 'D' BLOCK CKT I&II 02 NOS 11KV FEEDER
	7	21:05	22:05	7	<b>STAGE-I</b>	33KV KASHMIRI GATE - FOUNTAIN-II CKT
	8	22:05	22:18	5	<b>STAGE-I</b>	KASHMIRI GATE(220KV) 11KV FEEDERS
	9	21:10	21:22	17	<b>STAGE-I</b>	33KV SHALIMARBAGH (220KV)-RANI BAGH CKT.
06.08.09	1	22:20	23:00	28	<b>STAGE-I</b>	66KV VASANT KUNJ - VASANT KUNJ 'C' BLK CKT. I & II
07.08.09	1	09:18	09:27	19	<b>STAGE-I</b>	33KV OKHLA(220KV)-OKHLA PH-II CKT I & II
	2	18:24	19:05	100	<b>STAGE-I</b>	66KV NAJAFGARH - BODELA -II CKT. I & II
	3	19:11	19:25	100	<b>STAGE-I</b>	66KV NAJAFGARH - BODELA -II CKT. I & II
	4	19:13	19:48	10	<b>STAGE-I</b>	66KV NAJAFGARH - JAFFARPUR CKT. I & II
	5	19:13	19:55	91	<b>STAGE-I</b>	66KV PAPANKALAN-I - G-2 CKT. I & II, 11KV I/C II & III
	6	20:32	21:46	25	<b>STAGE-I</b>	66KV OKHLA(220KV)-OKHLA PH-I CKT I & II
	7	21:12	22:12	19	<b>STAGE-I</b>	33KV OKHLA(220KV)-OKHLA PH-II CKT I & II
	8	22:15	23:15	35	<b>STAGE-I</b>	66KV VASANT KUNJ - VASANT KUNJ 'C' BLK CKT. I & II
	9	19:12	19:57	86	<b>STAGE-I</b>	66KV GAZIPUR - VIVEK VIHAR CKT. I & II, 11KV FEEDERS
	10	19:15	19:47	56	<b>STAGE-I</b>	66KV GAZIPUR - KONDLI CKT. I & II, 11KV FEEDERS
08.08.09	1	00:38	01:38	3	<b>STAGE-I</b>	66KV VASANT KUNJ - VASANT KUNJ 'D' BLOCK CKT I&II 02 NOS 11KV FEEDER
	2	02:15	02:22	2	<b>STAGE-I</b>	66KV VASANT KUNJ - VASANT KUNJ 'D' BLOCK CKT I&II 02 NOS 11KV FEEDER
	3	02:15	02:30	110	<b>STAGE-I</b>	66KV SARITA VIHAR - MATHURA ROAD CKT. I & II
	4	02:30	02:55	97	<b>STAGE-I</b>	66KV SARITA VIHAR - MATHURA ROAD CKT. I & II
	5	09:14	10:00	13	<b>STAGE-I</b>	66KV OKHLA 220 KV - OKHLA PH -I CKT. I & II, 33KV OKHLA 220KV - MASJID MOTH CKT
	6	09:17	10:00	67	<b>STAGE-I</b>	66KV PAPANKALAN -I - G-6 PAPANKALAN CKT. I & II 66KV PAPANKALAN -I - BODELA-I CKT. 66KV PAPANKALAN-I - REWARI LINE CKT.
	7	10:12	10:25	43	<b>STAGE-I</b>	66KV OKHLA 220 KV - OKHLA PH -I CKT. I & II 33KV OKHLA 220KV - MASJID MOTH CKT, 33KV OKHLA(220KV)-OKHLA PH-II CKT I & II
	8	10:12	10:32	30	<b>STAGE-I</b>	66KV OKHLA(220KV)-OKHLA PH-I CKT I & II
	9	11:13	12:13	19	<b>STAGE-I</b>	33KV OKHLA - TUGLAKABAD CKT, 33KV OKHLA - ALAKHNANDA CKT. -I

DATE	S N.	TIME IN HRS.		LOAD AFFEC TED IN MW	STAGE / FREQ.	AREAS/ GROUP AFFECTED
		OUT	IN			
08.08.09	10	17:35	17:40	98	STAGE-I	66KV SARITA VIHAR - MATHURA ROAD CKT. I & II
	11	18:20	18:42	23	STAGE-I	66KV VASANT KUNJ - VASANT KUNJ 'D' BLK CKT I&II, 02 NOS 11KV FEEDER, 66KV VASANT KUNJ - VASANT KUNJ 'C' BLK CKT. I & II
	12	19:12	19:57	123	STAGE-I	66KV NAJAFGARH - G-5 PAPANKALAN CKT. I&II, 11KV FEEDERS, 20MVA PR. TR. -III AT NAJAFGARH 66KV NAJAFGARH - BODELA -II CKT. I & II
	13	19:15	20:15	74	STAGE-I	66KV PAPANKALAN - BINDAPUR CKT. I & II, 11KV FEEDERS
	14	19:20	19:24	90	STAGE-I	66KV SARITA VIHAR - MATHURA ROAD CKT. I & II
	15	20:30	20:44	0	STAGE-I	66KV NAJAFGARH - JAFFARPUR CKT. I & II
	16	21:05	21:17	18	STAGE-I	66KV OKHLA - OKHLA PH -I CKT. I & II, 33KV OKHLA - MASJID MOTH CKT
	17	21:05	21:48	60	STAGE-I	66KV PAPANKALAN-I - G-2 PAPANKALAN CKT. I & II
	18	21:05	21:15	0	STAGE-I	66KV NAJAFGARH - JAFFARPUR CKT. I & II
	19	11:10	12:10	25	STAGE-I	33KV KASHMIRI GATE - JAMA MASJID CKT, 33KV KASHMIRI GATE - TWON HALL CKT, 11KV FEEDERS
	20	19:15	19:19	54	STAGE-I	66KV GAZIPUR - VIVEK VIHAR CKT. I & II, 11KV FEEDERS
21	21:05	21:23	54	STAGE-I	66KV GAZIPUR - KONDLI CKT. I & II, 11KV FEEDERS	
09.08.09	1	00:05	01:05	28	STAGE-I	66KV VASANT KUNJ - VASANT KUNJ 'D' BLK CKT I&II 02 NOS 11KV FEEDER
	2	01:02	02:03	3	STAGE-I	11KV LOAD VASANT KUNJ(220KV)
	3	01:15	02:03	0	STAGE-I	66KV VASANT KUNJ - VASANT KUNJ 'D' BLK CKT I&II 02 NOS 11KV FEEDER
	4	22:32	22:37	53	STAGE-I	66KV OKHLA 220 KV - OKHLA PH -I CKT. I & II, 33KV OKHLA 220KV - MASJID MOTH CKT
	6	01:20	02:20	6	STAGE-I	33KV KASHMIRI GATE - FOUNTAIN CKT- II
	7	02:18	03:00	2	STAGE-I	KASHMIRI GATE(220KV) 11KV FEEDERS
	8	00:35	01:10	40	STAGE-I	33KV SHALIMAR BAGH - RANI BAGH CKT.I&II 33KV SHALIMARBAGH-33KV S.G.T.NAGAR CKT.
	10.08.09	1	00:08	00:54	32	STAGE-I
2		02:16	03:16	3	STAGE-I	66KV VASANT KUNJ-VASANT KUNJ 'D' BLOCK CKT I&II,02 NOS 11KV FEEDER
3		09:11	09:27	74	STAGE-I	66KV SARITA VIHAR - MATHURA ROAD CKT. I & II
4		11:30	11:48	41	STAGE-I	66KV OKHLA 220 KV - OKHLA PH -I CKT. I & II
5		12:22	12:54	46	STAGE-I	33KV OKHLA - TUGLAKABAD CKT, 33KV OKHLA - ALAKHNANDA CKT. -I 33KV OKHLA - RAIL POLE BATRA CKT
6		14:35	15:05	4	STAGE-I	66KV VASANT KUNJ - VASANT KUNJ 'D' BLK CKT I&II 02 NOS 11KV FEEDER
7		18:45	19:45	10	STAGE-I	33KV LODI ROAD - LAJPAT NAGAR-II CKT.I&II , 11KV FEEDERS
8		22:20	23:20	14	STAGE-I	66KV NAJAFGARH - JAFFARPUR CKT. I & II
9		22:20	23:20	128	STAGE-I	66KV PAPANKALAN-I-G-2 CKT. I & II, 11KV I/C II & III
10		23:05	24:00	40	STAGE-I	66KV OKHLA 220 KV - OKHLA PH -I CKT. I & II
11		00:17	00:58	20	STAGE-I	33KV KASHMIRI GATE(220KV)-JAMA MASJID CKT, 33KV KASHMIRI GATE(220KV) - TWON HALL CKT, 11KV FEEDERS
12		22:18	22:59	62	STAGE-I	66KV GAZIPUR - KONDLI CKT. I & II, 11KV FEEDERS
13		00:20	00:56	41	STAGE-I	33KV SHALIMAR BAGH (220KV) -WAZIRPUR -II CKT-I, 33KV SMB KHOSLA CKT. -II

DATE	S N.	TIME IN HRS.		LOAD AFFEC TED IN MW	STAGE / FREQ.	AREAS/ GROUP AFFECTED
		OUT	IN			
11.08.09	1	00:10	00:50	52	STAGE-I	33KV OKHLA(220KV)-OKHLA PH-II CKT I & II, 33KV OKHLA(220KV)-BALAJI CKT. -I &II, 33KV OKHLA (220KV) - NEHRU PLACE CKT. IV
	2	01:35	02:35	66	STAGE-I	33KV OKHLA - TUGLAKABAD CKT, 33KV OKHLA - ALAKNANDA CKT. -I 33KV OKHLA - RAIL POLE BATRA CKT
	3	03:15	04:15	0	STAGE-I	66KV VASANT KUNJ(220KV)-VASANT KUNJ 'D' BLOCK CKT I&II,02 NOS 11KV FEEDER
	4	09:26	09:55	43	STAGE-I	66KV NAJAFGARH - G-5 PAPANKALAN CKT. I&II, 11KV FEEDERS, 20MVA PR. TR. -III AT NAJAFGARH 220KV
	5	18:35	19:32	8	STAGE-I	66KV MEHRAULI - VASANT KUNJ 'D' BLOCK CKT-I & II
	6	19:05	19:44	2	STAGE-I	LODI ROAD (220KV) 11KV LOAD
	7	23:12	23:43	58	STAGE-I	66KV PAPANKALAN-I - G-2 PAPANKALAN CKT. I & II
	8	23:14	23:50	0	STAGE-I	66KV NAJAFGARH - JAFFARPUR CKT. I & II
	9	03:15	04:15	4	STAGE-I	33KV KASHMIRI GATE - FOUNTAIN CKT- II
	10	04:22	05:00	4	STAGE-I	KASHMIRI GATE(220KV) 11KV FEEDERS
	11	18:35	19:29	20	STAGE-I	33KV NARAINA - DMS CKT. , 1NO. 11KV FEEDER
	12	23:15	23:52	52	STAGE-I	66KV GAZIPUR - KONDLI CKT. I & II, 11KV FEEDERS
	13	03:15	04:15	35	STAGE-I	33KV SHALIMAR BAGH(220KV)-RANI BAGH CKT.I&II,SHALIMARBAGH-33KV S.G.T.NAGAR CKT.
12.08.09	1	00:23	01:23	32	STAGE-I	66KV OKHLA 220 KV - OKHLA PH -I CKT. I & II, 33KV OKHLA 220KV - MASJID MOTH CKT
	2	03:20	04:20	22	STAGE-I	66KV VASANT KUNJ - VASANT KUNJ 'C' BLK CKT. I & II
	3	07:10	08:10	8	STAGE-I	66KV MEHRAULI - VASANT KUNJ 'D' BLOCK CKT-I & II
	4	08:20	08:52	8	STAGE-I	33KV LODI ROAD - LAJPAT NAGAR-II CKT.I&II , 11KV FEEDERS
	5	11:35	12:10	73	STAGE-I	66KV NAJAFGARH - BODELA -II CKT. I & II
	6	11:38	12:38	65	STAGE-I	66KV PAPANKALAN-I - BINDAPUR CKT. I & II, 11KV FEEDERS
	7	13:17	14:17	79	STAGE-I	33KV OKHLA(220KV)-OKHLA PH-II CKT I & II, 33KV OKHLA(220KV)-BALAJI CKT. -I &II, 33KV OKHLA (220KV) - NEHRU PLACE CKT. IV
	8	14:38	15:10	32	STAGE-I	33KV OKHLA(220KV)-TUGLAKABAD CKT,33KV OKHLA(220KV)-ALAKHNANDA CKT. -I, 33KV OKHLA (220KV) - RAIL POLE BATRA CKT
	9	15:30	16:15	11	STAGE-I	66KV VASANT KUNJ - VASANT KUNJ 'C' BLOCK CKT. I & II
	10	19:10	20:10	8	STAGE-I	66KV MEHRAULI - VASANT KUNJ 'D' BLOCK CKT-I & II
	11	21:08	21:15	65	STAGE-I	33KV LODI ROAD - DEFENCE COLONY CKT. I & II, 11KV FEEDERS 33KV LODI ROAD - NDSE CKT., 33KV LODI ROAD - NIZAMUDDIN CKT.
	12	21:21	21:52	65	STAGE-I	33KV LODI ROAD - DEFENCE COLONY CKT. I & II, 11KV FEEDERS, 33KV LODI ROAD - NDSE CKT., 33KV LODI ROAD - NIZAMUDDIN CKT.
	13	23:16	23:55	98	STAGE-I	66KV NAJAFGARH (220KV) - BODELA -II CKT. I & II
	14	07:05	08:05	15	STAGE-I	33KV NARAINA (220KV) - DMS CKT. , 1NO. 11KV FEEDER
	15	11:35	11:55	84	STAGE-I	66KV GAZIPUR (220KV) - VIVEK VIHAR CKT. I & II, 11KV FEEDERS
	16	19:13	20:13	21	STAGE-I	33KV NARAINA (220KV) - DMS CKT. , 1NO. 11KV FEEDER
	17	23:20	23:40	39	STAGE-I	66KV GAZIPUR (220KV) - VIVEK VIHAR CKT. I & II, 11KV FEEDERS
	18	00:28	01:28	27	STAGE-I	33KV NARAINA (220KV) - REWARI LINE CKT I&II,11KV FEEDERS33KV NARAINA (220KV) - PAYAL CKT.
19	11:40	12:06	13	STAGE-I	33KV GOPALPUR (220KV) - AZADPUR CKT.I & II,11KV FEEDERS	

DATE	S N.	TIME IN HRS.		LOAD AFFEC TED IN MW	STAGE / FREQ.	AREAS/ GROUP AFFECTED
		OUT	IN			
13.08.09	1	00:01	00:06	72	STAGE-I	66KV NAJAFGARH (220KV) - BODELA -II CKT. I & II
	2	02:00	02:18	74	STAGE-I	66KV OKHLA 220 KV - OKHLA PH -I CKT. I & II, 33KV OKHLA 220KV - MASJID MOTH CKT, 33KV OKHLA(220KV)-OKHLA PH-II CKT I & II, 33KV OKHLA(220KV)-BALAJI CKT. -I &II, 33KV OKHLA (220KV) - NEHRU PLACE CKT. IV
	3	04:10	05:05	22	STAGE-I	66KV VASANT KUNJ - VASANT KUNJ 'C' BLOCK CKT. I & II
	4	05:15	06:10	3	STAGE-I	66KV VASANT KUNJ - VASANT KUNJ 'D' BLOCK CKT. I & II
	5	06:45	07:05	54	STAGE-I	66KV MEHRAULI - MALVIYA NAGAR CKT. I & II, 11KV I/C -I
	6	21:05	21:45	20	STAGE-I	33KV LODI ROAD - LAJPAT NAGAR-II CKT.I&II , 11KV FEEDERS
	7	05:16	06:16	32	STAGE-I	33KV KASHMIRI GATE(220KV)-FOUNTAIN CKT- II
	8	04:15	05:15	35	STAGE-I	33KV SHALIMAR BAGH (220KV) -WAZIRPUR -II CKT-I, 33KV SMB KHOSLA CKT. -II
14.08.09	1	19:40	19:53	42	STAGE-I	66KV MEHRAULI - MALVIYA NAGAR CKT. I & II, 11KV I/C -I
	2	20:12	20:18	21	STAGE-I	66KV MEHRAULI - VASANT KUNJ 'C' BLOCK CKT-I & II
18.08.09	1	12:08	12:29	19	STAGE-I	33KV LODI ROAD - LAJPAT NAGAR-II CKT.I&II , 11KV FEEDERS
	2	18:48	19:02	50	STAGE-I	33KV OKHLA(220KV)-TUGLAKABAD CKT,33KV OKHLA(220KV)-ALAKHNANDA CKT. -I, 33KV OKHLA (220KV) - RAIL POLE BATRA CKT
	3	19:20	19:53	55	STAGE-I	66KV VASANT KUNJ (220KV) - VASANT KUNJ 'C' BLOCK CKT. I & II
19.08.09	1	19:21	19:58	45	STAGE-I	33KV OKHLA(220KV)-TUGLAKABAD CKT,33KV OKHLA(220KV)-ALAKHNANDA CKT. -I 33KV OKHLA (220KV) - RAIL POLE BATRA CKT
	2	19:40	19:57	25	STAGE-I	33KV KASHMIRI GATE(220KV)-JAMA MASJID CKT, 33KV KASHMIRI GATE(220KV)-T'WON HALL CKT, 11KV FEEDERS
	3	20:17	20:30	56	STAGE-I	66KV VASANT KUNJ (220KV) - VASANT KUNJ 'C' BLOCK CKT. I & II
	4	21:07	22:07	3	STAGE-I	66KV VASANT KUNJ (220KV) - VASANT KUNJ 'D' BLOCK CKT. I & II
	5	19:41	19:53	26	STAGE-I	33KV SHALIMAR BAGH (220KV) -WAZIRPUR -II CKT-I, 33KV SMB KHOSLA CKT. -II
20.08.09	1	19:10	19:15	60	STAGE-I	33KV OKHLA(220KV)-OKHLA PH-II CKT I & II, 33KV OKHLA(220KV)-BALAJI CKT. -I &II 33KV OKHLA (220KV) - NEHRU PLACE CKT. IV
	2	19:25	19:57	60	STAGE-I	33KV OKHLA(220KV)-OKHLA PH-II CKT I & II, 33KV OKHLA(220KV)-BALAJI CKT. -I &II, 33KV OKHLA (220KV) - NEHRU PLACE CKT. IV
21.08.09	1	00:17	00:28	39	STAGE-I	66KV MEHRAULI - MALVIYA NAGAR CKT. I & II, 11KV I/C -I
22.08.09	1	06:32	06:57	32	STAGE-I	66KV VASANT KUNJ (220KV) - VASANT KUNJ 'C' BLOCK CKT. I & II, 66KV VASANT KUNJ(220KV)-VASANT KUNJ 'D' BLOCK CKT I&II,02 NOS 11KV FEEDER
	2	10:18	10:23	20	STAGE-I	33KV OKHLA(220KV)-TUGLAKABAD CKT,33KV OKHLA(220KV)-ALAKHNANDA CKT. -I 33KV OKHLA (220KV) - RAIL POLE BATRA CKT
	3	11:02	11:28	42	STAGE-I	66KV VASANT KUNJ (220KV) - VASANT KUNJ 'C' BLOCK CKT. I & II
	4	20:38	20:44	58	STAGE-I	66KV OKHLA 220 KV - OKHLA PH -I CKT. I & II, 33KV OKHLA 220KV - MASJID MOTH CKT
	5	23:07	23:26	66	STAGE-I	66KV VASANT KUNJ (220KV) - VASANT KUNJ 'C' BLOCK CKT. I & II
	6	23:17	23:24	16	STAGE-I	33KV SHALIMAR BAGH(220KV)-RANI BAGH CKT.I&II

DATE	S N.	TIME IN HRS.		LOAD AFFEC TED IN MW	STAGE / FREQ.	AREAS/ GROUP AFFECTED
		OUT	IN			
24.08.09	1	14:26	14:28	12	<b>Df/dt Mode</b>	33KV SHALIMAR BAGH(220KV)-RANI BAGH CKT.I&II
	2	12:07	12:15	80	<b>STAGE-I</b>	66KV VASANT KUNJ (220KV) - VASANT KUNJ 'C' BLOCK CKT. I & II
	3	13:18	14:20	3	<b>STAGE-I</b>	66KV VASANT KUNJ(220KV)-VASANT KUNJ 'D' BLOCK CKT I&II,02 NOS 11KV FEEDER
	4	19:09	19:30	11	<b>STAGE-I</b>	66KV NAJAFGARH (220KV) - G-5 PAPANKALAN CKT. I&II, 11KV FEEDERS, 20MVA PR. TR. -III AT NAJAFGARH 220KV
	5	20:17	20:27	76	<b>STAGE-I</b>	66KV NAJAFGARH (220KV) - BODELA -II CKT. I & II
	6	21:50	22:37	12	<b>STAGE-I</b>	66KV NAJAFGARH (220KV) - JAFFARPUR CKT. I & II
	7	21:50	22:40	102	<b>STAGE-I</b>	66KV NAJAFGARH (220KV) - G-5 PAPANKALAN CKT. I&II, 11KV FEEDERS, 66KV NAJAFGARH (220KV) - BODELA -II CKT. I & II, 66KV NAJAFGARH (220KV) - JAFFARPUR CKT. I & II
	8	23:13	23:44	40	<b>STAGE-I</b>	33KV OKHLA(220KV)-OKHLA PH-II CKT I & II, 33KV OKHLA(220KV)-BALAJI CKT. -I &II, 33KV OKHLA (220KV) - NEHRU PLACE CKT. IV
	9	14:26	14:28	92	<b>Df/dt Mode</b>	66KV NAJAFGARH (220KV) - G-5 PAPANKALAN CKT. I&II, 11KV FEEDERS, 66KV NAJAFGARH (220KV) - BODELA -II CKT. I & II, 66KV NAJAFGARH (220KV) - JAFFARPUR CKT. I & II
	10	19:09	19:30	73	<b>STAGE-I</b>	66KV WAZIRABAD -II (220KV) - GHONDA CKT. I & II
	11	21:16	21:30	62	<b>STAGE-I</b>	66KV GAZIPUR (220KV) - KONDLI CKT. I & II, 11KV FEEDERS
25.08.09	1	12:42	12:44	89	<b>Df/dt Mode</b>	SARITA VIHAR – MATHURA ROAD CKT-I & II AND 11KV FEEDERS
26.08.09	1	19:06	19:14	2	<b>STAGE-I</b>	LODI ROAD (220KV) 11KV LOAD
	2	22:15	22:23	82	<b>STAGE-I</b>	66KV NAJAFGARH (220KV) - BODELA -II CKT. I & II